

NiceLabel Printer Driver Installation Guide

Rev-1602 ©NiceLabel 2016.

1 Contents

1 Contents	2
2 Purpose of this Guide	3
3 Printer Driver Installation	4
3.1 PrnInst Based Printer Driver Installation	4
3.2 PrnInst Based Driver Installation using Remote Desktop	13
3.3 Windows Based Printer Driver Installation	14
3.4 Additional Installation Options	16
4 Printer Driver Removal	19
4.1 PrnInst Based Printer Driver Removal	19
4.2 Printer Driver Removal using Windows Tools	22
4.3 Removing Drivers from Windows Driver Store	22
5 Printer Driver Update	24
5.1 Selecting the Drivers	24
5.2 PrnInst Based Printer Driver Update	24
6 Troubleshooting	28
6.1 Locked Printer Driver	28
6.2 Possible Printer Driver Update Issues	29
7 Appendix: Command Line Parameters for PrnInst Installation and Removal	30
8 Online Self-help	37

2 Purpose of this Guide

The purpose of this installation manual is to guide you through the process of NiceLabel printer driver installation.

This manual should be used in combination with printer installation and user manuals. See driver release notes for detailed information on the latest features, specifics, solved and known issues.

3 Printer Driver Installation

There are two ways to install NiceLabel printer drivers. We recommend using NiceLabel **PrnInst** application. The application is controlled by a graphical user interface or via command line interface. The alternative option is to use **Windows Add** printer process.

See corresponding sections of this manual to perform driver installation successfully:

NOTE: Before starting with printer driver installation, make sure you are logged in as an administrator.

3.1 PrnInst Based Printer Driver Installation

Printer Installation Wizard (PrnInst) is a dedicated application for installing NiceLabel printer drivers on Windows based systems.

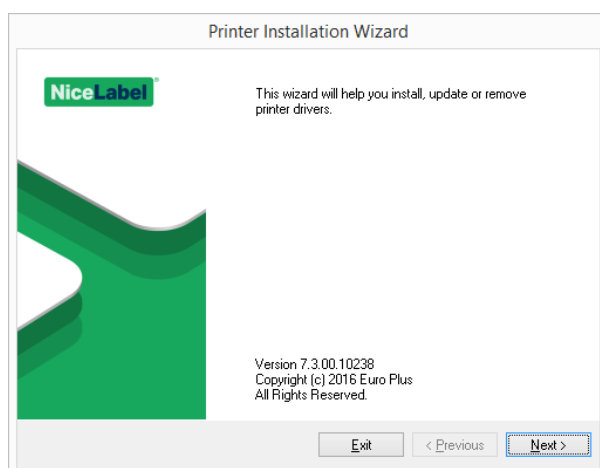
PrnInst based driver installation is available for devices that are connected to LAN networks or any computer port.

Download the appropriate printer driver from [NiceLabel printer download page](#) to your local disk and run the downloaded self-extractable .exe file. PrnInst application starts automatically. Follow the below described wizard steps to install the driver.

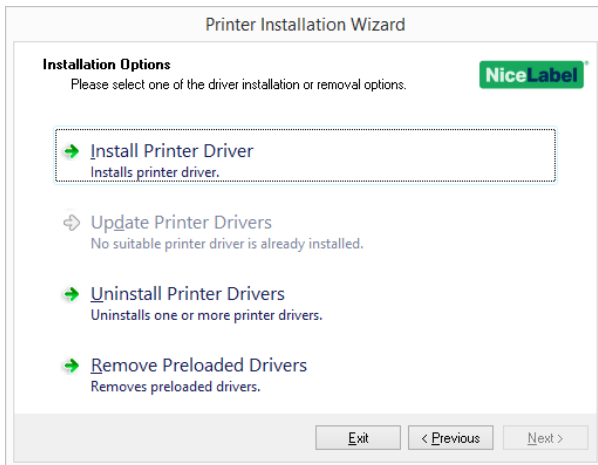
3.1.1 Introductory Steps

To complete introductory PrnInst steps, follow the steps below.

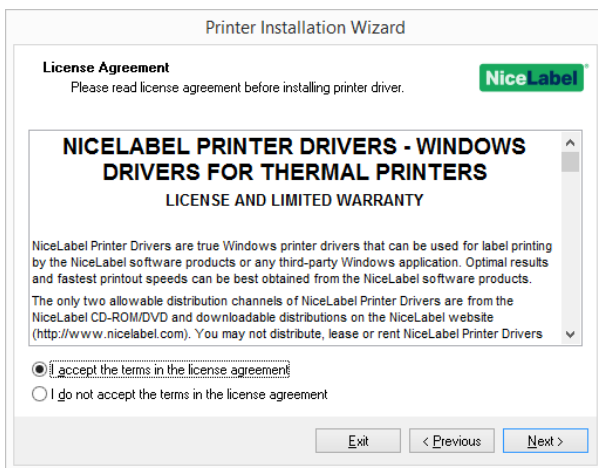
1. Unzip the installation files to a selected folder.
2. Run **PrnInst.exe**.
3. Welcome screen appears. Click **Next**.



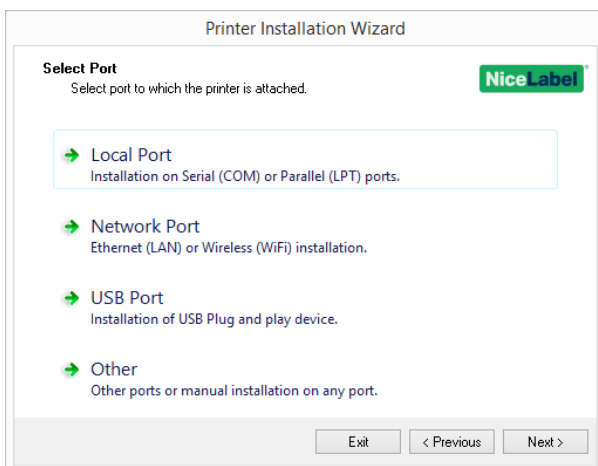
4. Select **Install Printer Driver** and click **Next**.



5. Accept the terms of license agreement and click **Next**.



6. Select printer port and click **Next**.



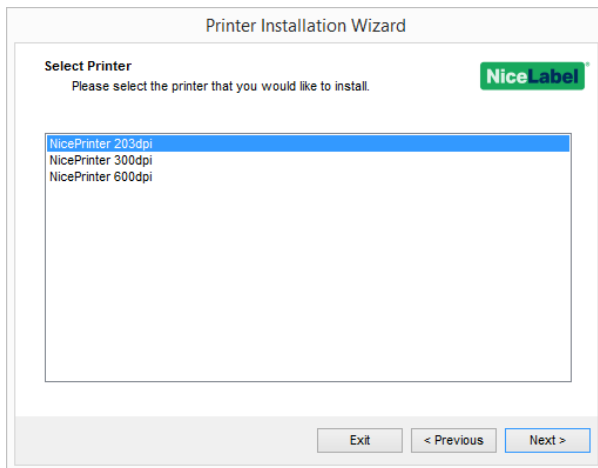
Steps for the available printer port options are described in dedicated topics:

- [Local port installation steps](#)
- [Network port installation steps](#)
- [USB port installation steps](#)
- [Other port installation steps](#)

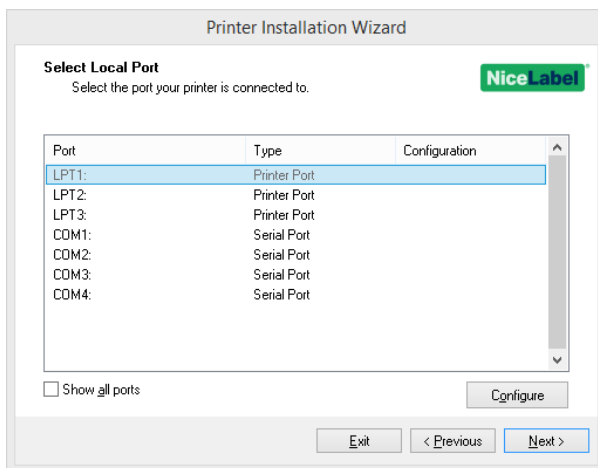
3.1.2 Local Port Installation Steps

After selecting local port printer connection option, follow the steps below.

1. Select the appropriate printer model.

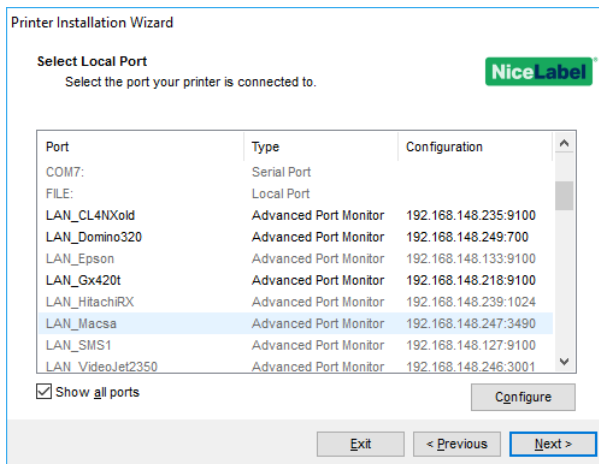


2. Select the local port to which your printer is connected.



NOTE: Port(s) which are already taken by other printers are grayed-out and cannot be selected.

Show all ports option displays all available ports on the system.



NOTE: If the printer supports bidirectional communication, its driver automatically reports which ports are suitable for the printer to connect to.

To configure the currently selected local port, click **Configure**. System dialog opens allowing you to set the appropriate port-specific values.

Click **Next** to proceed to [Printer Options](#) step.

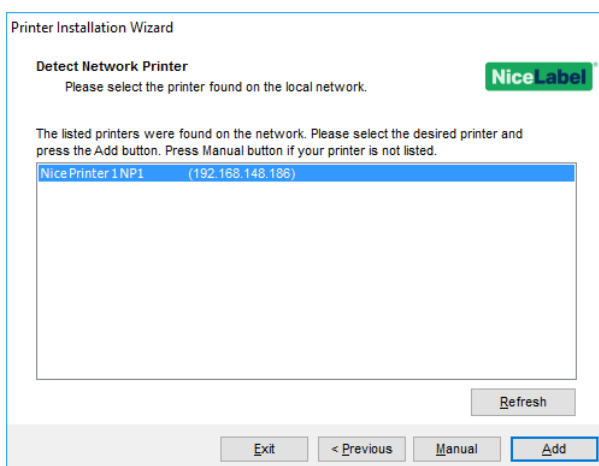
3.1.3 Network Port Installation Steps

After selecting the network port printer connection option, install one of the printers which are discovered on the network, or install it manually.

3.1.3.1 Network Port Installation Using Network Discovery

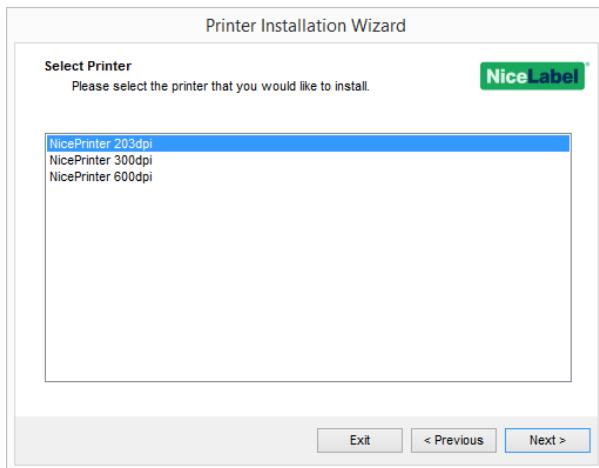
Detect Network Printer window appears immediately after starting the network port installation process.

1. Mark the detected network printer and click **Add**.



NOTE: For printers that identify themselves by their series (and not by the exact model), select from the listed series of printers. These series may include multiple printer models. The selection will direct you to the [Printer options step](#).

2. If specific models of the detected printer's vendor are listed, select the appropriate one and click **Next**.



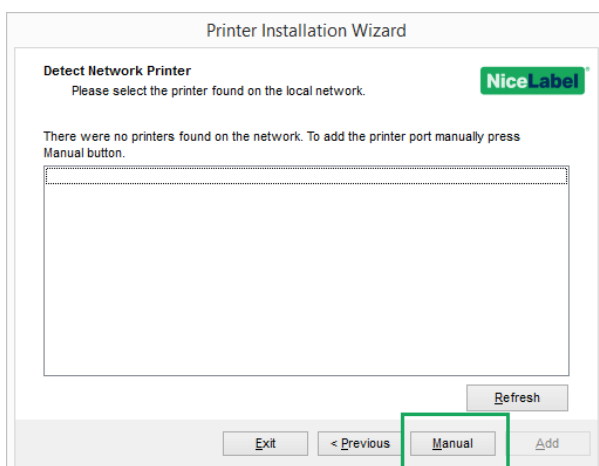
3. You are directed to the [Printer options](#) step.

NOTE: Network discovery is available if the printer model supports bidirectional communication.

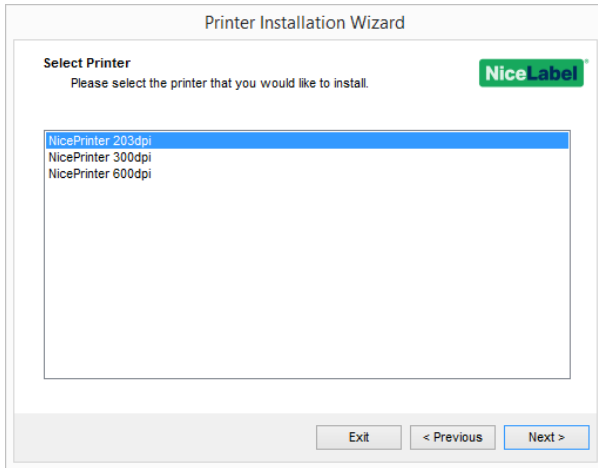
3.1.3.2 Manual Network Port Installation

Detect Network Printer window appears immediately after starting the network port installation process.

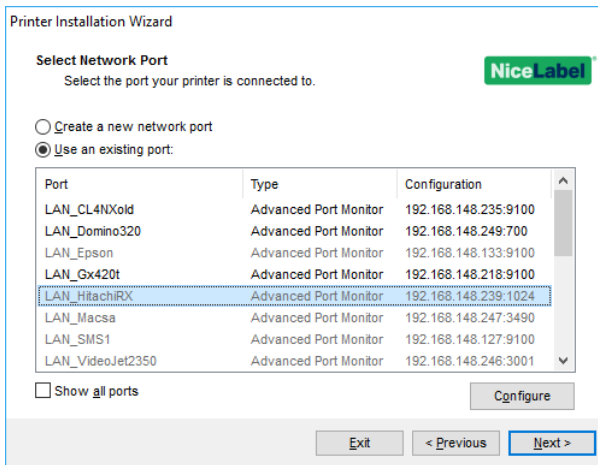
1. To start the manual network port printer driver installation, click **Manual**.



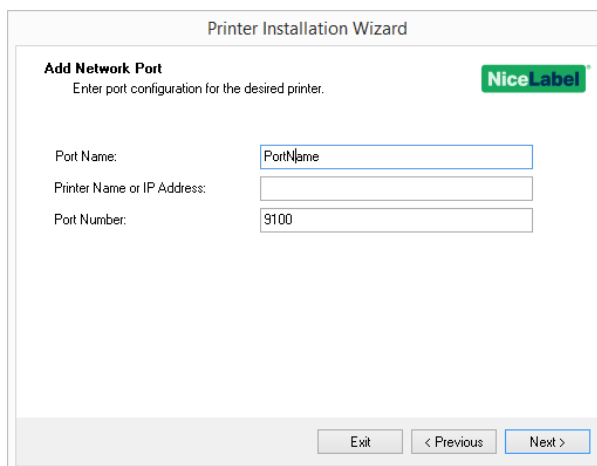
2. Select the appropriate printer model.



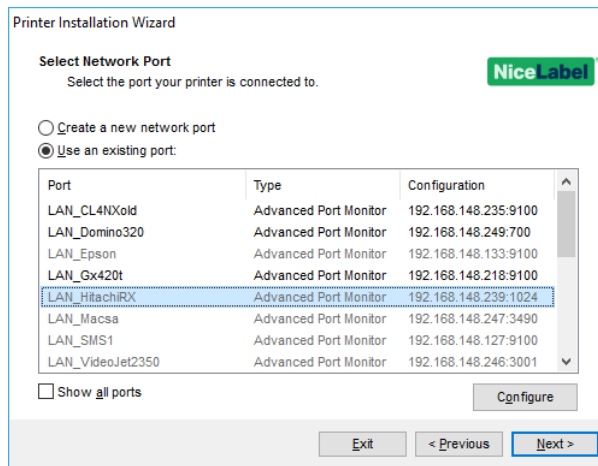
3. **Select Network Port** window allows you to select which network port should your printer be connected to.



- **Create a new network port** option opens the **Add Network Port** window.



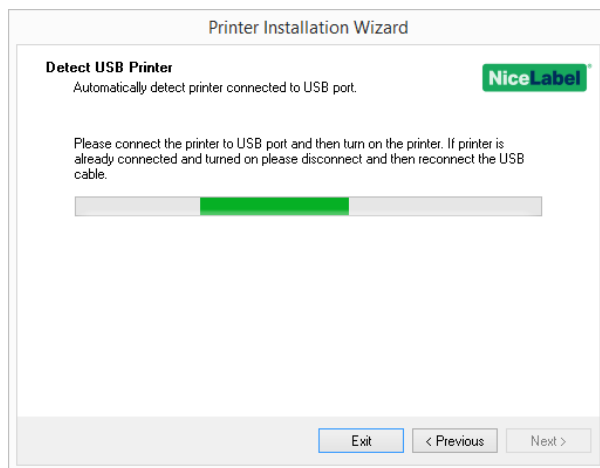
- **Port Name:** defines the name for the newly created network port.
 - **Printer Name or IP Address:** defines which printer (its name or IP address) connects to the newly created network port.
 - **Port Number:** number of the newly created network port. PrnInst suggests the number automatically.
- **Use an existing port:** selects an automatically detected network port to connect the printer to.



- Enable **Show all ports** option to list all available (also non-network) ports.
- Click **Next** to proceed to [Printer Options](#) step.

3.1.4 USB Port Installation Steps

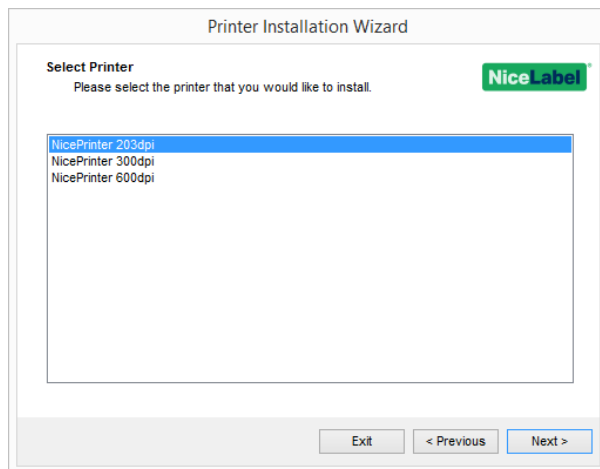
When installing a USB printer, PrnInst automatically detects the connected printer using its Plug and Play ID.



1. Click **Next** after detecting the printer. PrnInst will take you to the final stage of printer driver installation process. [Printer option window](#) appears.

2. If the printer driver for the connected printer is already installed, PrnInst offers you to update it. Click **Next** to proceed to [printer driver update](#).

If a driver does not recognize the printer Plug and Play ID, the **Select Printer** window appears.

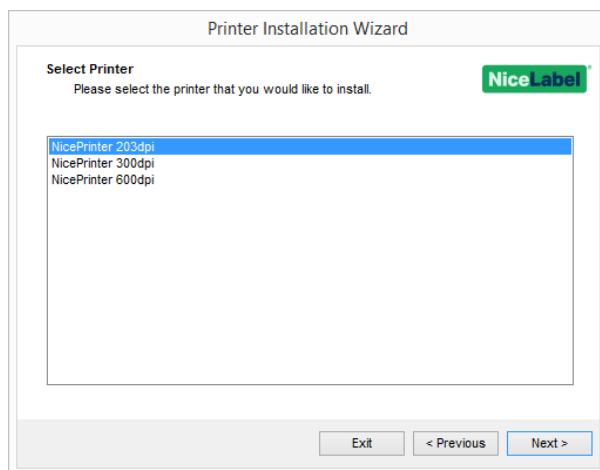


1. Click **Next** after selecting the printer model. PrnInst will take you to the final stage of printer driver installation process. [Printer option window](#) appears.

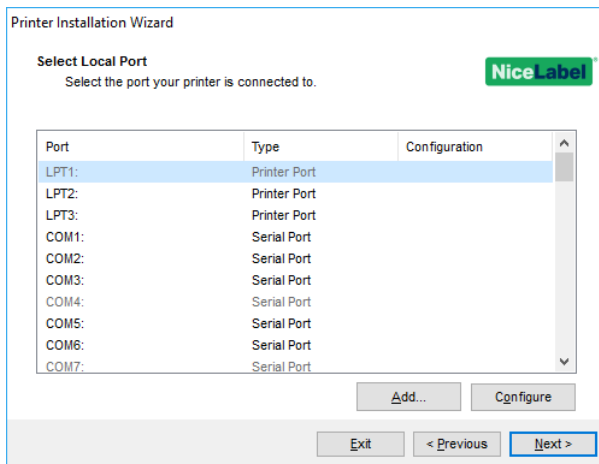
3.1.5 Other Port Installation Steps

Other allows you to connect the printer to a dedicated port or to connect it manually. After selecting the **Other** port connection option, follow the steps below.

1. Select the appropriate printer model.



2. Select the port for connecting the printer. The port can either be an existing or a newly added one.



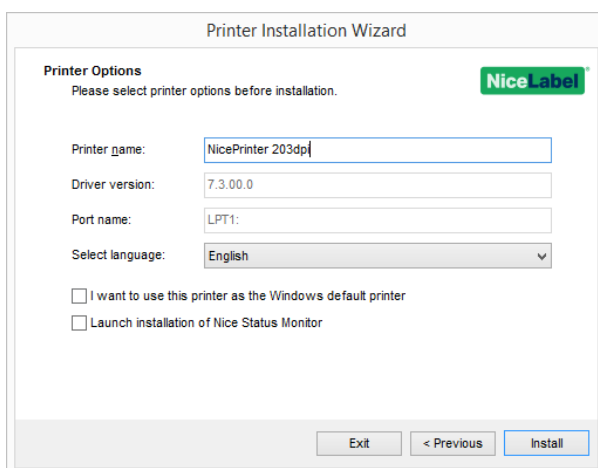
- **Add...** creates a new port. Press the button to open **Advanced TCP/IP Port Configuration** window.
- **Configure** button allows you to configure the local port. See section [Local port installation steps](#) for details.

3. Click **Next** to proceed to [Printer options](#).

3.1.6 Printer Options

Printer Options window allows you to set printer identity parameters.

- **Printer name:** sets custom printer name to make it easily recognizable after the installation.
- **Driver version:** information about the current driver version.
- **Port name:** information about the currently used port.
- **Select language:** defines driver user interface language.



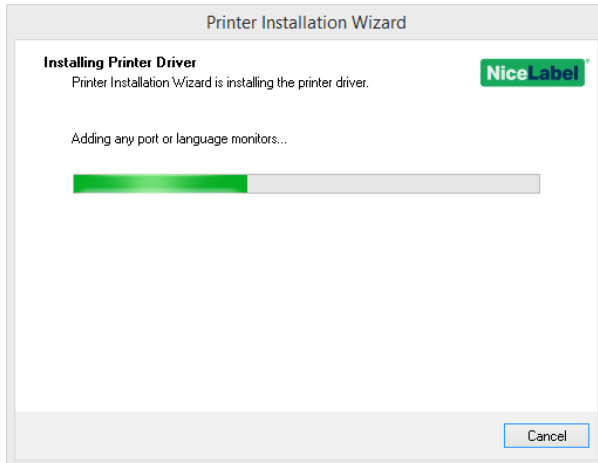
Enable **I want to use this printer as the Windows default printer** to set the current printer as the default system printer.

Enable **Launch installation of Nice Status Monitor** to activate the [status monitor](#) after the driver installation is complete.

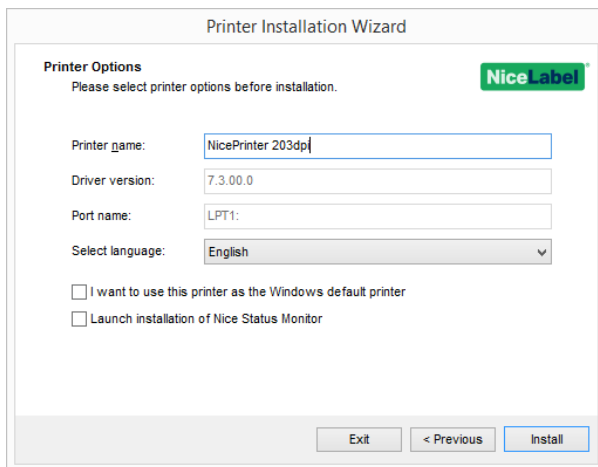
Click **Install** to initiate the [printer driver installation process](#).

3.1.7 Installation Process

Printer driver installation window appears after clicking **Install**.



Summary window appears after a successful installation.

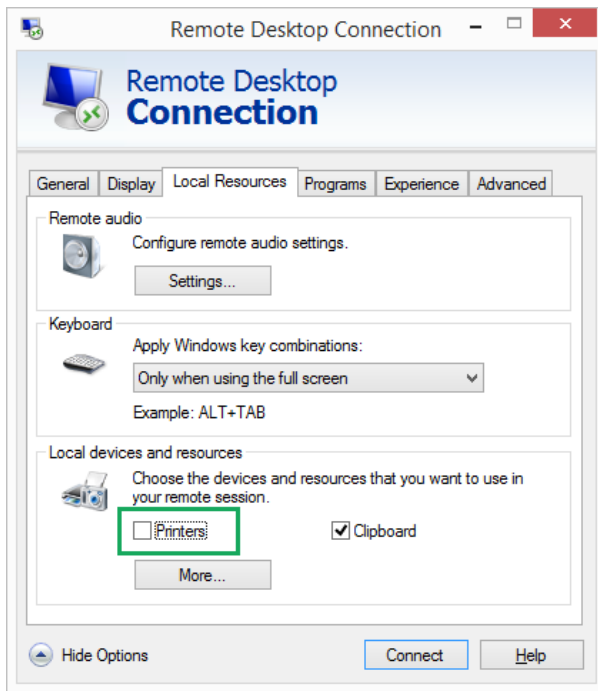


Enable **Install another printer** if you wish to continue installing additional printers.

Click **Exit** to finish the installation.

3.2 PrnInst Based Driver Installation Using Remote Desktop

Printer mapping must be disabled when installing a printer driver using the remote desktop connection. To disable it, deselect **Printers** option of the **Local Resources** tab in the **Remote Desktop Connection** window.



3.3 Windows Based Printer Driver Installation

3.3.1 Printer Driver Installation Using Windows Tools

Printer driver installation using Windows Installer is used on devices that are connected via one of the following ports:

- USB port
- Parallel port (LPT)

3.3.1.1 Plug And Play Driver Setup

During this procedure, Windows automatically detects the newly connected hardware using a plug and play event on both ports – USB and LPT.

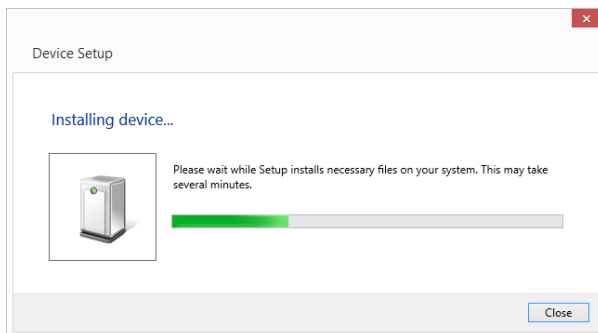
Follow these steps to install a NiceLabel printer driver:

1. Connect the printer to a power outlet and turn it on.
2. Connect the printer to a computer using USB or LPT port.
3. The driver is located online and downloaded to the PC. Automatic installation follows immediately.
4. The installed printer is ready for printing.

NOTE: Automatic printer detection is supported on USB and LPT ports only. The driver needs to be installed using PrnInst on other ports .

The **Add a printer** detection procedure differs between various operating systems. Follow the below described steps.

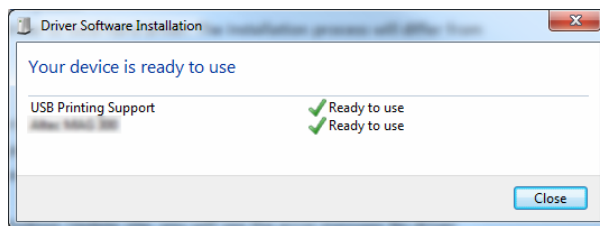
- The operating system automatically checks Windows Update and installs the driver.



- From this point on, the installation procedure differs if the printer driver is available on the Windows Update site or not. See the scenarios in the following two subsections.

3.3.1.2 Printer Driver Available On Windows Update Site

The printer driver is automatically downloaded and installed – system notification message is displayed when complete. If you click the notification message, the new **Driver Software Installation** dialog is displayed. Monitor the installation status using this dialog:



3.3.1.3 Printer Driver Unavailable On Windows Update Site – Manual Printer Driver Installation

If the printer driver is unavailable on the Windows Update site, download printer driver to the local disk. Follow these steps to install a NiceLabel printer driver using the manual Windows **Add a printer** procedure.

1. Connect the printer to power outlet and turn it on.
2. Connect the printer to a computer.
3. Windows detects the printer.
4. Windows Update automatically checks for the printer driver online and fails. Start with manual installation.

The manual driver installation varies between various operating systems. Follow the below described steps.

1. Open **Control Panel** and click **Hardware and Sound > Devices and Printers > Device Manager**
2. Expand node **Other devices**. The installed printer is listed here.

3. Right click the printer and select **Update Driver Software**.
4. At the prompt **How do you want to search for driver software?** select **Browse my computer for driver software**.

3.3.1.4 Preinstalling The Printer Drivers

Driver pre-installation option brings two benefits:

- It speeds up the installation process – Windows Update is not contacted.
- It simplifies the USB printer installation in cases when printer drivers are not available on the Windows Update site.

To preinstall a printer driver on Windows, use the PrnInst command line options – see section [Appendix: PrnInst Based Printer Driver Installation Using Command Line Parameters](#). If a new device is detected via plug and play event (on USB or parallel port), the operating system automatically installs the preinstalled printer driver. It does not query Windows Update for the driver.

3.3.1.4.1 Syntax

```
PrnInst.exe /PREINSTALL=<full path to INF file>
```

3.3.1.4.2 Sample

```
PrnInst.exe /PREINSTALL=C:\Drivers\SAMPLE_DRIVER\SAMPLE_DRIVER.inf
```

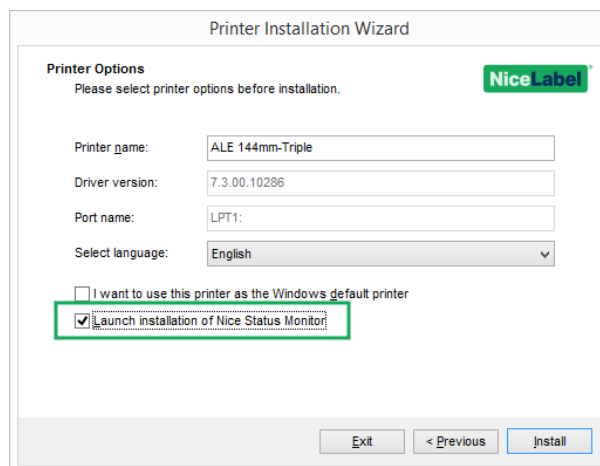
3.4 Additional Installation Options

3.4.1 NiceStatus Monitor

NiceStatus Monitor is a utility that makes status monitoring for multiple installed printers easy and efficient. There are two ways to install the Nice Status Monitor. Follow the steps described in the subsections below.

3.4.1.1 Installation During PrnInst Based Printer Driver Installation.

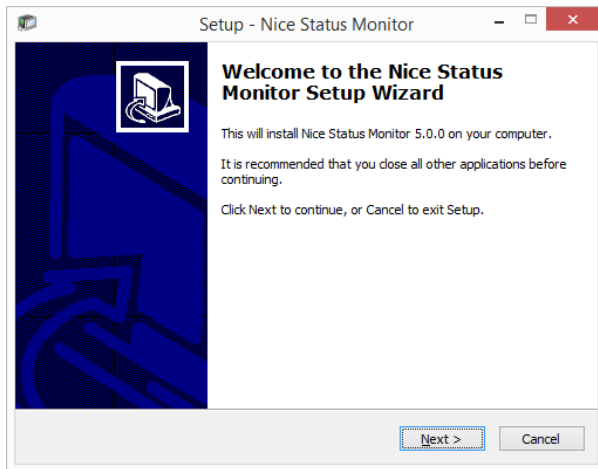
Nice Status Monitor installation is an option offered by the PrnInst. To run it, check the **Launch installation of Nice Status Monitor Setup Wizard** option in the Printer options window.



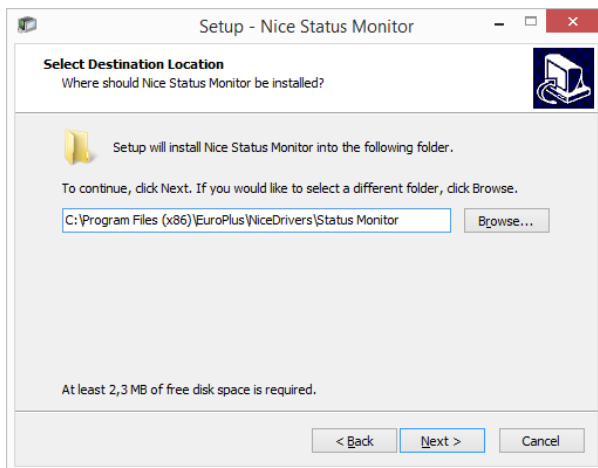
The screenshot shows the 'Printer Installation Wizard' dialog box. The title bar reads 'Printer Installation Wizard'. Below the title bar, there is a 'Printer Options' section with the instruction 'Please select printer options before installation.' and a 'NiceLabel' logo. The options are: 'Printer name:' with the value 'ALE 144mm-Triple'; 'Driver version:' with the value '7.3.00.10286'; 'Port name:' with the value 'LPT1:'; and 'Select language:' with a dropdown menu set to 'English'. There are two checkboxes: 'I want to use this printer as the Windows default printer' (unchecked) and 'Launch installation of Nice Status Monitor' (checked). The 'Launch installation of Nice Status Monitor' checkbox is highlighted with a red rectangular box. At the bottom of the dialog, there are three buttons: 'Exit', '< Previous', and 'Install'.

This option runs the installation wizard:

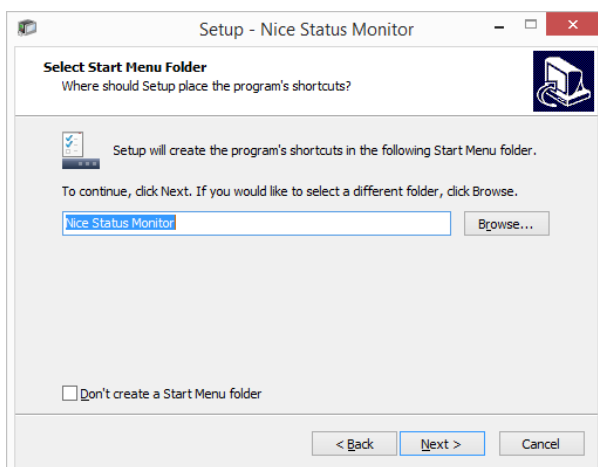
1. Nice Status Monitor setup window appears. Click **Next**.



2. Select the installation folder. Click **Next**.



3. Select the Start Menu Folder. If you don't want to create it, clear the **Start Menu Folder** checkbox. Click **Next**.



4. Select **Additional Tasks**:

- By default, a desktop icon is created for Nice Status Monitor. Clear the checkbox to disable this option.
- By default, Nice Status Monitor runs at Windows startup. Clear the checkbox to disable this option.

5. Click **Next**.

6. **Ready to Install** summary window appears. Click **Install**.

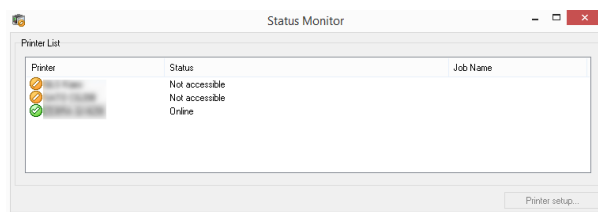
3.4.1.2 Independent Installation

Nice Status Monitor may be installed at any time. To install it, run **StatusMonitorSetup.exe** in the driver installation folder.





3.4.1.3 Using The Nice Status Monitor

Nice Status Monitor is an application that gives you an overview of:

- installed printers with status indicators.
- printer statute descriptions
- job names



Printer status indicators are:

-  icon indicates that the printer is up and ready for printing (**Status:** Online).
-  icon indicates that the installed printer is currently not accessible – printing is not possible (**Status:** Not accessible).
-  icon indicates an error – printing is not possible (**Status:** <error description>).
-  icon indicates warning – printing is possible, check warning message.

Job name displays the currently printed file name.

Printer Setup button allows you to access the selected printer properties.

4 Printer Driver Removal

As with driver installation, removal may also be done in two ways. Standard method is to use the PrnInst application. Another option is to use Windows administrative tools.

NOTE: Make sure you are logged in as a user with sufficient rights before starting the driver removal process.

When removing a printer driver, make sure that:

- The printer is not set as a default printer.
- There are no print jobs waiting in the print queue.
- The printer is not locked by the Windows spooler process.

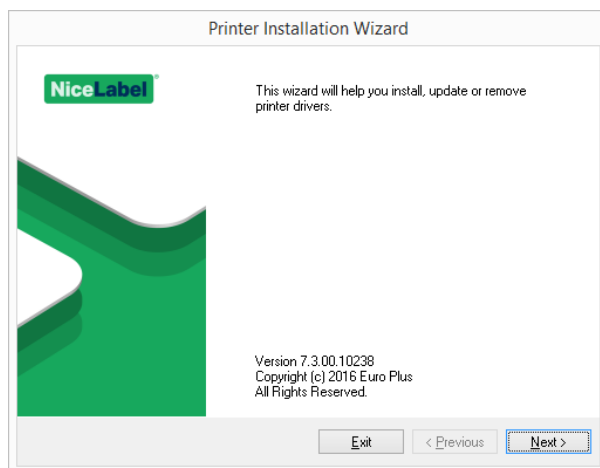
If you are unable to delete the printer driver, perform one of the following actions:

- Restart Windows spooler.
- Delete print jobs from the Windows spooler.
- Computer restart is required in certain cases.

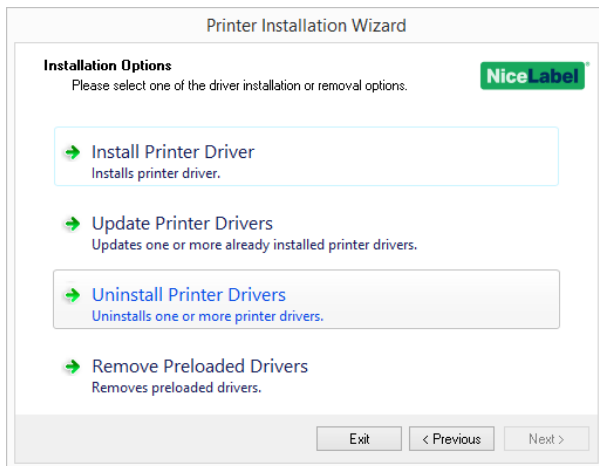
4.1 PrnInst Based Printer Driver Removal

To remove a printer driver using PrnInst, follow these steps:

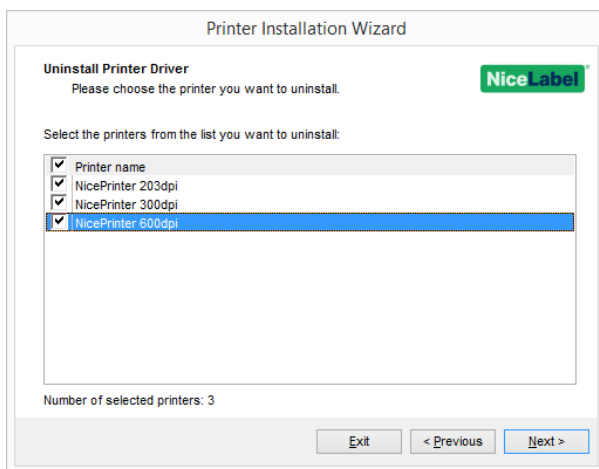
1. Run **PrnInst.exe**.
2. Welcome screen appears. Click **Next**.



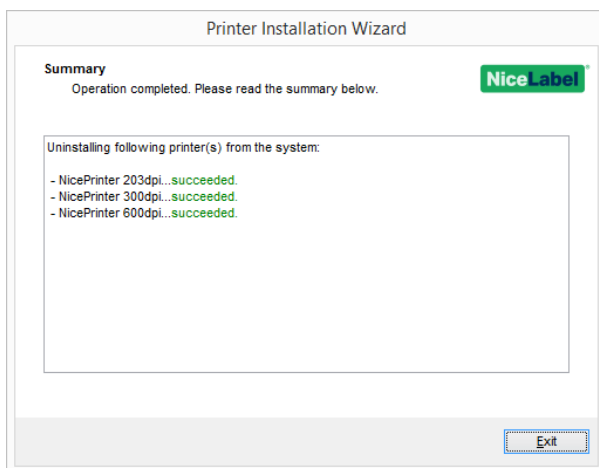
3. Select **Uninstall Printer Drivers**.



4. Select the printer driver to be removed.



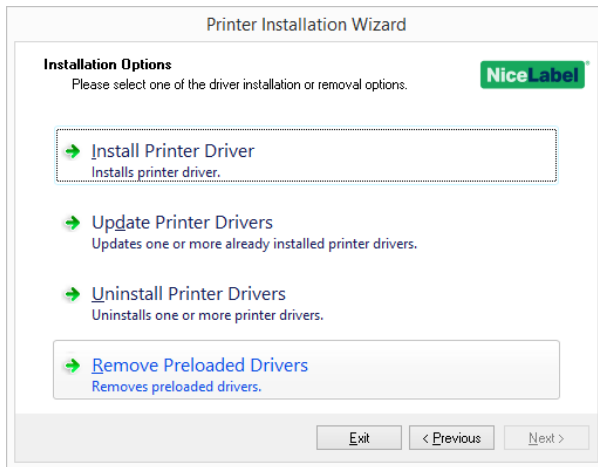
5. Click **Next**. Successful printer removal is confirmed.



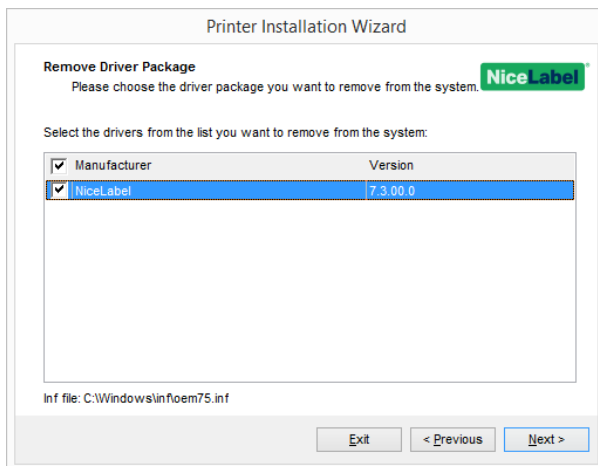
4.1.1 Simultaneous Removal Of Preloaded Printer Drivers Using PrnInst

Follow these steps to remove the preloaded printer drivers using PrnInst.

1. Start PrnInst and click **Next**.
2. Select **Remove Preloaded Drivers**.



3. Click **Next**.
4. Select printers from the list and click **Next**.



NOTE: The **Remove Preloaded Drivers** option only removes the driver installation files from the system. To uninstall a driver, select option **Uninstall Printer** in the PrnInst **Options** window.

4.1.2 Driver Removal Using Command Line Parameters

Use the command line parameters to remove the printer drivers without interacting with GUI. Control the PrnInst with command scripts as defined in the following section.

Provide the printer name in the command-line parameter UNINSTALLPRN.

4.1.2.1 Syntax

```
/UNINSTALLPRN=<printer name>
```

4.1.2.2 Sample

PrnInst.exe "/UNINSTALLPRN=Nice Thermal Printer"

4.2 Printer Driver Removal Using Windows Tools

Follow this procedure to delete a printer and to remove a printer driver from the system. Choose the procedure, compatible with your operating system.

NOTE: For advanced users only. We recommend using PrnInst for uninstalling the drivers.

1. To open the **Print Management** console, click **Control Panel > System and Security > Administrative Tools** and double click **Print Management**.
2. Expand **Print Servers** - <computer name> node.
3. Select **Printers node**.
4. Delete the printer.
5. Select **Drivers** node.
6. To delete a driver, select it and run **Action > Remove Driver Package**.

NOTE: Print Management console is not available by default. Please refer to the console instructions to activate it.

4.3 Removing Drivers From Windows Driver Store

4.3.1 Complete Removal Of Driver Files

To completely remove all printer files from Windows driver store, follow the procedure described in this section.

- Uninstall the printer driver. See section [Printer Driver Removal](#). When deleting the printer from your computer, this procedure only removes the printer as a device. Driver files still exist on the disk. When you connect the printer next time, Windows installs the stored previously-used printer driver. To verify which drivers are stored in the system, do the following:
 - Open **Command Prompt** as an administrator.
 - Enter the following command: `pnputil.exe -e`
- A list of all INF files for the installed drivers appears. They are named as oem<number>.inf. Here is an example:

```
Published name :  
Driver package provider :  
Class :  
Driver date and version :  
Signer name :
```

- When searching for the appropriate INF file, check for:
 - Driver package provider
 - Driver date and version

4.3.2 Driver Package Removal

To delete a driver package, follow this procedure:

- Open **Command Prompt** as administrator.
 - Open **All programs > Accessories** Start menu group.
 - Right click **Command Prompt**.
 - Select **Run as administrator** in the menu.
- Run the following command to list all INF files: `pnputil.exe -e`
- Find INF package to be removed (check **Driver package provider**, **Driver date** and **Version** to identify the correct package).
- Delete package using the following command: `pnputil.exe -f -d oem<number>.inf`
- Replace `<number>` parameter with the number that identified in step 2.

The utility deletes the INF file:

```
C:\Windows\system32>pnputil.exe -f -d oem19.inf  
Microsoft PnP Utility  
  
Driver package deleted successfully.  
C:\Windows\system32>_
```

5 Printer Driver Update

5.1 Selecting The Drivers

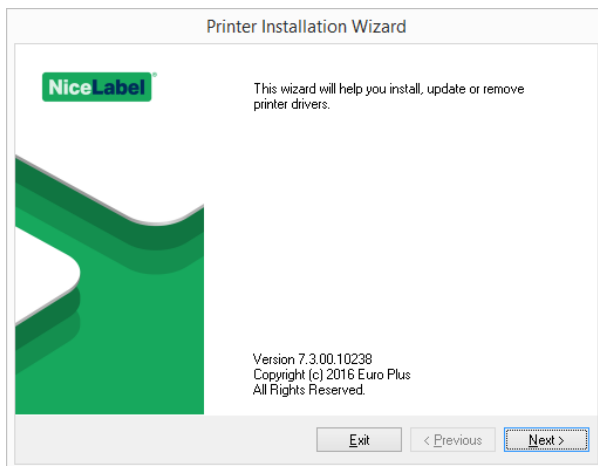
The majority of printer driver distributions contains printer drivers for several printers. Certain driver files are shared among the printers that are included in the same printer driver distribution.

NOTE: If you have installed several drivers from the same printer driver distribution, the drivers for all these printers are going to be updated if you update a single driver.

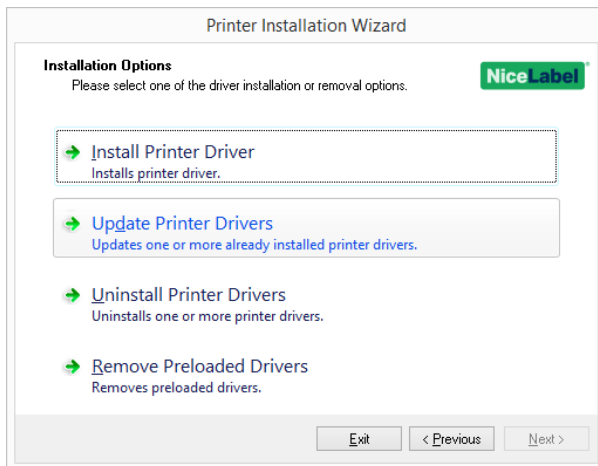
5.2 PrnInst Based Printer Driver Update

To update an existing printer driver, run PrnInst application for that specific printer vendor.

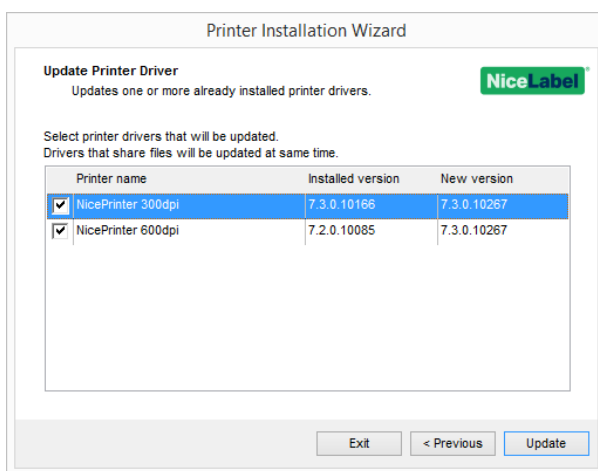
1. Run **PrnInst.exe**.
2. Welcome screen appears. Click **Next**.



3. Installation Options window appears. Select **Update Printer Drivers** option.



4. Select a printer to update its driver.



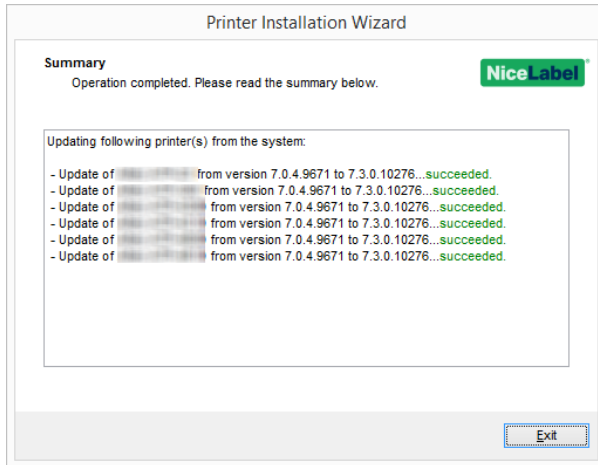
5. Compare **Installed version** column with **New version** column for details about the version upgrade.

NOTE: If printer drivers for multiple printer models of the same vendor share the same driver files, these printers are selected and upgraded simultaneously.

Click **Update**.

NOTE: Grayed-out printers are currently missing and cannot be updated.

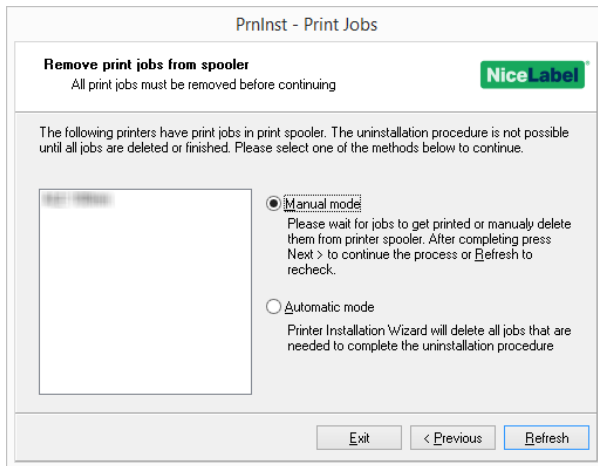
6. **Summary** window appears after a successful driver update.



7. Click **Exit** to close PrnInst.

5.2.1 Update With Print Jobs In Spooler

With print jobs waiting in the Windows Spooler, PrnInst displays the following notification:

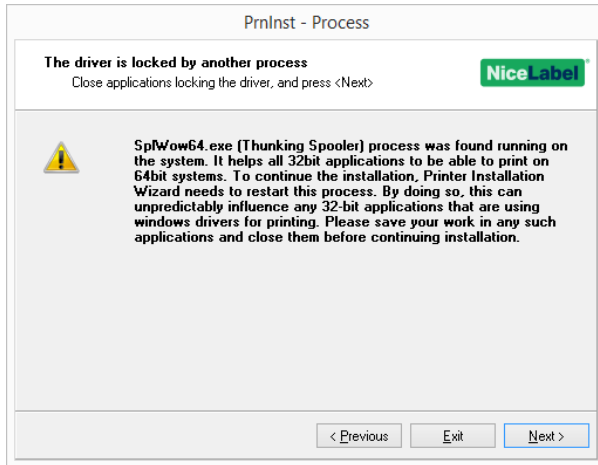


These two options are available:

- **Manual mode.** Delete current print jobs manually. To check if the queue is empty and to continue with the driver update, click **Refresh**.
- **Automatic mode** – PrnInst deletes all print jobs and continues with the installation.

To verify that the printer driver has been updated correctly, check the driver version in the **About** tab after the update. If the old version is displayed, reboot Windows to finish the update process.

On a 64-bit Windows operating system, a dedicated process named Splwow64.exe enables 32-bit applications to print with 64-bit printer drivers. During the driver upgrade, a warning message for Splwow64.exe locking the printer driver appears. After clicking **Next**, PrnInst restarts the Splwow64.exe process. This unlocks the printer driver and completes the upgrade process.



6 Troubleshooting

6.1 Locked Printer Driver

During the installation, PrnInst checks for applications that could lock the printer driver files. If detected, the locking applications are displayed.

WARNING: Locked drivers cannot be replaced.

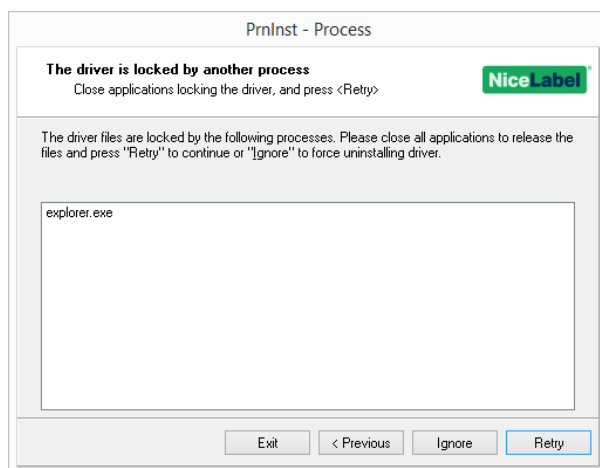
With locked drivers present, the following options are available:

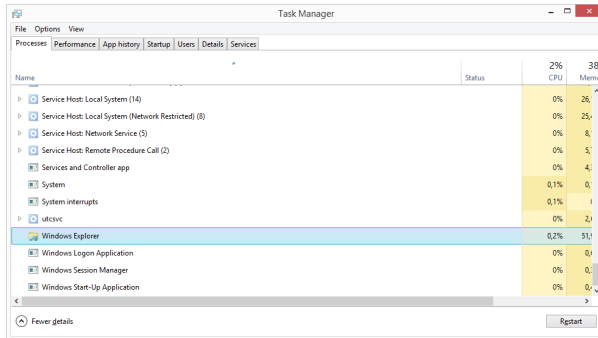
- Close the applications that are locking the printer driver.
- Stop the installation and restart the computer. After restarting, repeat the installation procedure.
- If closing the application window has no effect, use **Task Manager** to end the tasks. See the examples below.
- Continue with the installation. New files are copied – installation is complete after restarting the computer.

6.1.1 Example 1: Windows Explorer Locking Driver

If the printer properties have been checked in **Devices and Printers**, Windows Explorer locks the printer driver. Even after closing the **Devices and Printers**, Windows Explorer still locks the driver.

In such case, restart **Windows Explorer** process in **Task Manager > Processes** tab.



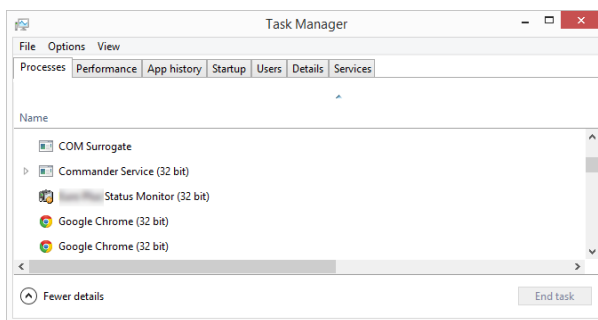


To restart the process, right click **Windows Explorer** process and select **Restart**.

6.1.2 Example 2: Status Monitor Locking Driver

In certain cases, **Status Monitor** application locks the printer driver and makes uninstalling a driver impossible.

To stop the Status Monitor, open the **Task Manager** and search for the **Status Monitor** in **Processes** tab. Right click Status monitor and select **End task**.



6.2 Possible Printer Driver Update Issues

The driver installer may try to update an already installed printer driver. There are several possible issues that prevent the driver update. The most common two causes are:

- Printer driver is locked. An application has locked it. This prevents the new driver from being installed. The driver files are copied, but unused until the operating system reboot.
- There are print jobs waiting to be printed. You must make sure there are no jobs in queue. You must either print or delete jobs from Windows Spooler.

In most cases you will have to restart the PC to complete the printer driver installation. We recommend using PrnInst installation utility. Benefits are:

- **PrnInst** informs about possible issues.
- **PrnInst** helps resolving problems, which arise during the driver update.

To verify that the printer driver is updated correctly, verify the driver version in the **About** tab after the update. If the old version is still displayed, reboot Windows to finish the update process.

7 Appendix: Command Line Parameters for PrnInst Installation and Removal

Use the command line parameters to install the printer drivers without interacting with the PrnInst GUI. Control PrnInst using command scripts as defined in this section.

7.1 INSTPRN – Printer Driver Installation

Use this parameter to install a printer driver. Specify the printer name and the port that the driver should use. The specified printer name must match the actual name of the printer. To find out the correct name of the printer, see the <printer_brand>.INF file. It contains the list of all available printer names. Search for the .INF file in the folder, where you have stored the printer driver installation files.

7.1.1 Syntax

```
/INSTPRN=xxxxxxxxx#yyyyy[#wwwww]  
xxxxx - full printer driver name  
yyyyy - port name  
wwwww - printer destination name - optional
```

7.1.2 Sample

Use the /DIR parameter with the /INSTPRN parameter to define the printer driver location.

NOTE: INSTPRN must be the last specified parameter in the command line.

7.2 INSTMULTPRN – Installation Of Multiple Printers

Use this parameter to simultaneously install drivers for multiple printers. Specify printer name and port the driver should use. Printer name must match the actual name of the printer.

To find out the correct name of the printer, see the <printer_brand>.INF file. It contains the list of all available printer names. You will find the .INF file in the folder, where you have stored the printer driver installation files.

7.2.1 Syntax

```
/INSTMULTPRN=xxxxx  
xxxxx - full file name and path of Printer Driver Installation List file
```

Syntax of Printer Driver Installation List file structure:

xxxxxxxxxxxxx#yyyyyyyyyy#zzzzzzzzz[#wwwwwww]

xxxxxxxxxxxxx - full path of start folder for "reading of .INF files"

yyyyyyyyyy - full printer driver name

zzzzzzzzz - port name

wwwwwww - printer destination name - optional

7.2.2 Sample

```
PrnInst.exe /INSTMULTPRN=C:\tmp\PrinterList.tmp
```

For example, PrinterList.tmp file contains the following lines.

```
C:\Drivers\PRINTER1\#Printer1#LPT1:
```

```
C:\Drivers\PRINTER2\#Printer2#LPT2:
```

```
C:\Drivers\PRINTER3\#Printer3#LPT3:
```

Three printer drivers are installed in this sample – Printer1 (linked to LPT1 port), Printer2 (linked to LPT2 port) and Printer3 (linked to LPT3 port).

7.3 LANG – Setting The PrnInst Language

Use this parameter to define the language used in the Printer Installation Wizard. The application always uses the default Windows operating system language. Default language is defined in **Control Panel > Regional and Language Options**.

Use this parameter to specify other languages for the Printer Installation Wizard.

NOTE: If you omit this parameter, the default language is used.

7.3.1 Syntax

```
/LANG=xxx
```

xxx – language ID

Language	Language ID
Chinese – Simplified	SCH
Chinese – Traditional	CHI
Croatian	CRO
Danish	DAN
Dutch	DUT
English	ENG
Finnish	FIN
French	FRA
German	GER

Language	Language ID
Greek	GRE
Hebrew	HEB
Hungarian	HUN
Italian	ITA
Japanese	JAP
Korean	KOR
Lithuanian	LIT
Polish	POL
Portuguese	POR
Russian	RUS
Slovak	SVK
Slovenian	SLO
Spanish	ESP
Swedish	SWE
Thai	TAI
Ukrainian	UKR

7.3.2 Sample

`PrnInst.exe /LANG=GER`

7.4 UNINSTALL – Uninstall Printer

Use this parameter to run the PrnInst in the uninstall mode. You will see the list of installed printer drivers. Select one or more drivers and remove them.

7.4.1 Syntax

`/UNINSTALL`

7.4.2 Sample

`PrnInst.exe /UNINSTALL`

7.5 UNINSTALLPRN – Uninstall Specific Printer

Use this parameter to remove a specific printer driver from the system.

NOTE: Provide the exact printer name (as installed). To be sure, copy the printer name from **Control Panel > Printers & Faxes.**

7.5.1 Syntax

`/UNINSTALLPRN=xxxxxx`

xxxxx – the exact printer name you wish to uninstall

7.5.2 Sample

`PrnInst.exe "/UNINSTALLPRN=NiceLabel-Printer"`

7.6 UNINSTALLALL – Uninstall All Printers

Use this parameter to remove all printer drivers from the Windows system.

WARNING: This action erases the entire range of installed NiceLabel printer drivers from the system.

7.6.1 Syntax

`/UNINSTALLALL`

7.6.2 Sample

`PrnInst.exe /UNINSTALLALL`

7.7 NOLICENCE – No License Display

Use this parameter to start the application in a mode where no NiceLabel printer driver license and warranty information are displayed during the installation.

7.7.1 Syntax

`/NOLICENCE`

7.7.2 Sample

`PrnInst.exe /NOLICENCE`

7.8 NOCERT – Do Not Force Driver Certification When Installing Driver

Use this parameter to prevent the PrnInst from using the certification installation if the driver has not been digitally signed. Even if the driver has been certified, the installation remains the same as if a normal non certified driver would be installed.

7.8.1 Syntax

`/NOCERT`

7.8.2 Sample:

`PrnInst.exe /NOCERT`

7.9 DIR – Change Start Browsing Path

Use this parameter to specify the location of the drivers. This is the path that the application uses to browse for the printer drivers. Default location is the folder with subfolders from where the application is started.

NOTE: DIR must always be the first parameter in the command line.

7.9.1 Syntax

`/DIR=xxxxxx`

xxxxxx – full path from which to start searching for .INF files

7.9.2 Sample

`PrnInst.exe /DIR=C:\Drivers\`

7.10 PREINSTALL – Preinstall Driver Package

Use this parameter to preinstall the printer driver on the system. Windows automatically finds the driver needed when the user connects the printer.

7.10.1 Syntax

`/PREINSTALL=xxxxxx`

xxxxxx – full path pointing to the .inf file

7.10.2 Sample

`PrnInst.exe /PREINSTALL=C:\Drivers\SAMPLE_DRIVER\SAMPLE_DRIVER.inf`

7.11 UNINSTALLPACKAGE – Uninstall Driver Package

Use this parameter to uninstall the printer driver from the system. Windows cannot automatically find the driver of the printer, because it was removed from Windows Driver Storage.

7.11.1 Syntax

```
/UNINSTALLPACKAGE=xxxxxx
```

xxxxxx – full path pointing to the .inf file

7.11.2 Sample

```
PrnInst.exe /UNINSTALLPACKAGE=C:\Drivers\Nice\NiceLabel-printer.inf
```

7.12 INSTALLPORTMON – Silent Installation Of Port Monitor

Use this parameter to silently install a port monitor from the printer driver distribution. When using this command, do not use any other commands from the command line list. Note that this installation does not install the printer driver, just the Port Monitor.

7.12.1 Syntax

```
/INSTALLPORTMON /name=aaaaa [/type=bbbbbb] [/monitor=ccccc] [/inf=dddddd] []
```

Network port type

```
/ip=eeeeee [/port=ffffff]
```

Serial port type

```
/port=gggggg [/baudRate=hhhhh] [/dataBits=iiiiii] [/parity=jjjjjj]
```

```
[/stopBits=kkkkkk] [/flowControl=llllll]
```

Parallel port type

```
/port=mmmmmm [/reception=nnnnn] [/receptionInterval=ooooo]
```

```
[/transmission=ppppp]
```

Specific port types

```
[/download=rrrrrr] [/printingTimeout=qqqqq] [/downloadTimeout=sssss]
```

aaaaa - port name that will be displayed in port list

bbbbbb - type of port <LAN, LPT, COM>. Parameter is omissible, depending on Port Monitor.

ccccc - name of the Port Monitor being installed. Port monitor name can be found in information installation (.inf) file. Omissible if there is only 1 port monitor.

dddddd - folder location of the information installation file containing Port Monitor. Search for installation information files is subfolder recursive. Omissible if there is only one information file in Printer Installation Wizard folder (or subfolders).

LAN Port

eeeeee - ip address of printer on the network.

ffffff - printer s network port number. Parameter is omissible, depending on Port Monitor.

COM Port

ggggg - systems COM port number (example for COM3: value is 3)

hhhhh - baud rate of serial port in bits per seconds (valid values: 100, 300, 600, 1200, 2400, 4800, 9600, 14400, 19200, 38400, 57600, 115200, 128000, 256000)

iiiiii - data bits parameter for serial port. (Valid values: 5, 6, 7, 8)

jjjjj - parity parameter for serial communication. (Valid values: none, odd, even, mark, space)

kkkkk - stop bits parameter. (Valid values: 1, 1.5, 2)

lllll - flow control parameter (Valid values: xonxoff, hardware, none)

LPT Port

mmmmm - systems LPT port number (example for LPT1: value is 1)

nnnnn - reception timeout for LPT port when download function is enabled. Parameter is omissible. Default value is 500ms.

ooooo - reception interval for LPT port when download function is enabled. Parameter is omissible. Default value is 200ms.

ppppp - transmission for LPT port when download function is enabled. Parameter is omissible. Default value is 3000ms.

Specific Ports

rrrrr - enabled port specifics for downloading to printer. Omissible, default values is disabled. (Valid values: 0 - disabled, 1 - enabled)

qqqqq - printing timeout value in milliseconds for port specific communication. Omissible, default values is 50ms.

sssss - download timeout value in milliseconds for port specific communication. Omissible, default values is 7000ms.

7.12.2 Sample

```
PrnInst.exe /INSTALLPORTMON "-monitor=Advanced Port Monitor" /name=MyNewPort /ip=192.168.1.5 /port=9100
```

```
PrnInst.exe /INSTALLPORTMON -inf=c:\temp\driver\ "/monitor=Advanced Port Monitor" /name=e=NewLanPort /ip=192.100.021.005 /port=9100
```

```
PrnInst.exe /INSTALLPORTMON /inf=c:\temp\driver\ "/monitor=Specific Port Monitor" /ip=192.100.1.1 /type=LAN
```

```
PrnInst.exe /INSTALLPORTMON "/monitor=Specific Port Monitor" /name=MySerialPort /type=COM /port=3 /baudRate=128000 /dataBits=8 /Parity=Even /flowControl=none /StopBits=2
```

```
PrnInst.exe /INSTALLPORTMON "/monitor=Specific Port Monitor" /name=MySerialPort2 /type=COM /port=1 /baudRate=19200 /dataBits=8 /Parity=none /flowControl=Hardware /StopBits=1.5
```

```
PrnInst.exe /INSTALLPORTMON "/monitor=Specific Port Monitor" /name=MyParallelPort /type=LPT /port=3
```

8 Online Self-help

You can find the latest builds, updates, workarounds for problems and Frequently Asked Questions (FAQ) on the product web site at www.nicelabel.com.

For more information please refer to:

- Knowledge base: <http://www.nicelabel.com/support/knowledge-base>
- NiceLabel Support: <http://www.nicelabel.com/support/technical-support>
- NiceLabel Tutorials: <http://www.nicelabel.com/learning-center/tutorials>
- NiceLabel Forums: <http://forums.nicelabel.com/>

NOTE: If you have a Service Maintenance Agreement (SMA), please contact the premium support as specified in the agreement.

Americas

+1 262 784 2456

sales.americas@nicelabel.com

EMEA

+386 4280 5000

sales@nicelabel.com

Germany

+49 6104 68 99 80

sales@nicelabel.de

China

+86 21 6249 0371

sales@nicelabel.cn

www.nicelabel.com

