

NiceLabel 10 Installation Guide

Rev-2024-3

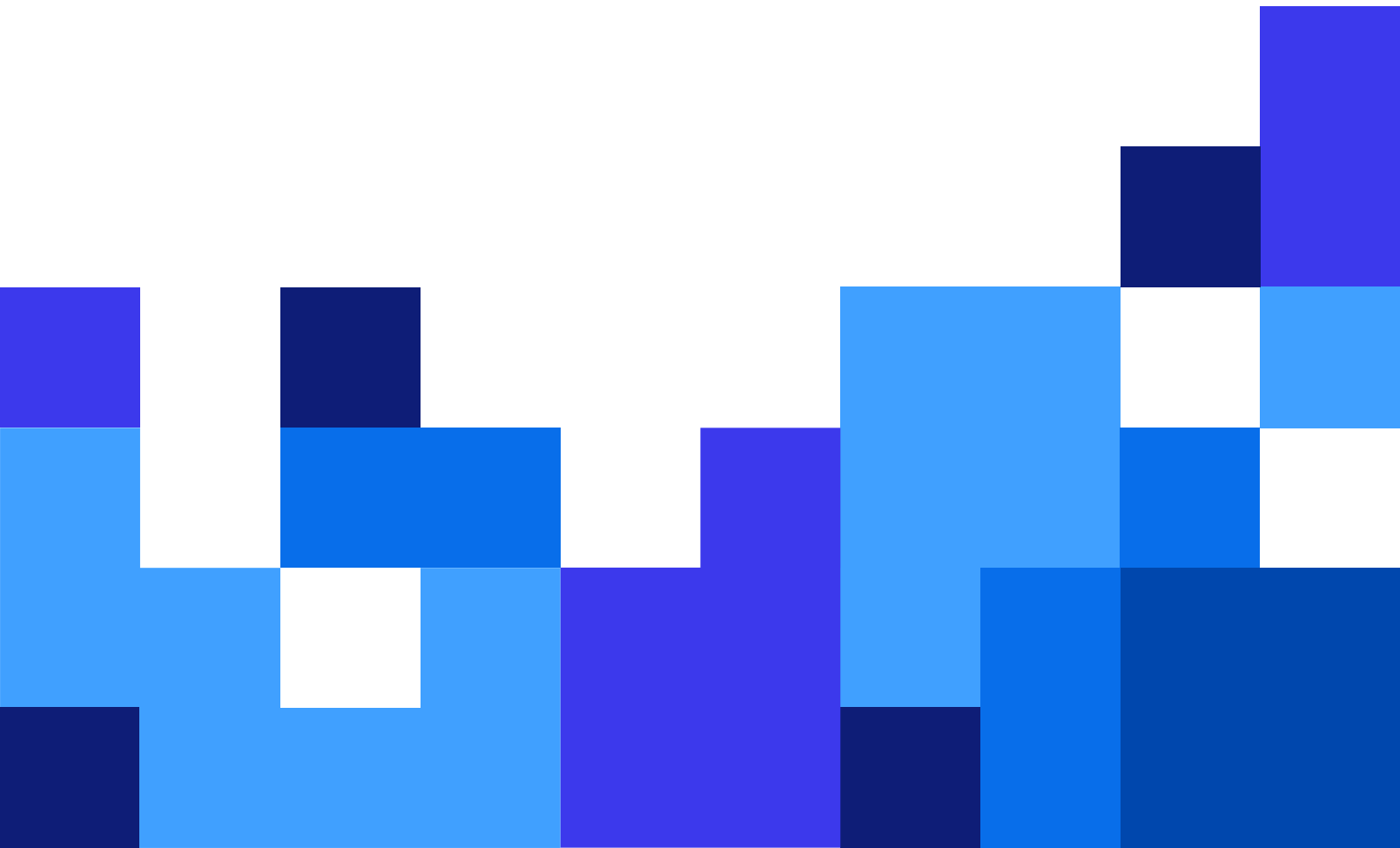


Table of Contents

1. Setup procedure	3
1.1. System requirements	3
1.2. Introductory setup steps	3
1.3. Free trial setup	5
1.4. Setup with license key or hardware key	7
1.5. Setup with Control Center	10
1.6. Post-trial options	11
1.7. Version updates	12
1.8. Enforcing configuration options	13
1.9. Silent installation	14
2. NiceLabel 10 licensing	15
2.1. Licensing options	15
2.2. License key activation	17
2.2.1. License activation dialog	18
2.3. License upgrade	21
2.3.1. Upgrade Types	21
2.3.2. Product edition upgrade	22
2.3.3. Version upgrade	22
2.3.3.1. Upgrading the existing installation	23
2.3.3.2. Installing and activating NiceLabel NiceLabel 10 with upgrade key	24
2.3.4. Upgrade number of printers	25
3. Installing printer drivers	27
4. Deactivating software	28
4.1. License deactivation procedure	28
4.2. Moving software licenses to another computer	28
4.2.1. Moving Hardware Activation	29
4.2.2. Moving Software Activation	29
5. Uninstalling NiceLabel Desktop Designer and Automation	30

1. Setup procedure

1.1. System requirements

Before you start your installation process, always double-check for the latest [system requirements](#).

1.2. Introductory setup steps

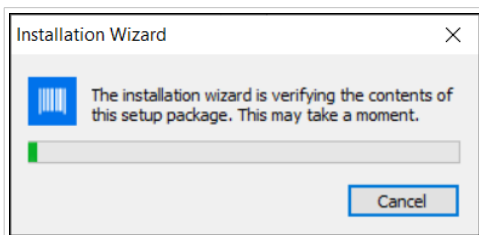


NOTE

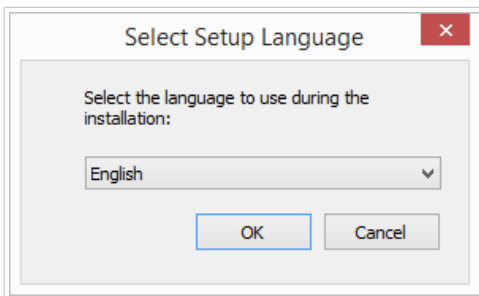
To install NiceLabel 10 on the Terminal Services environment or run NiceLabel 10 via Remote Desktop Session, you need Designer PowerForms or stronger license.

Complete these steps to install NiceLabel 10 on your computer.

1. Download the software package from . Run **NiceLabel10.exe**. The installer verifies the installation package content.



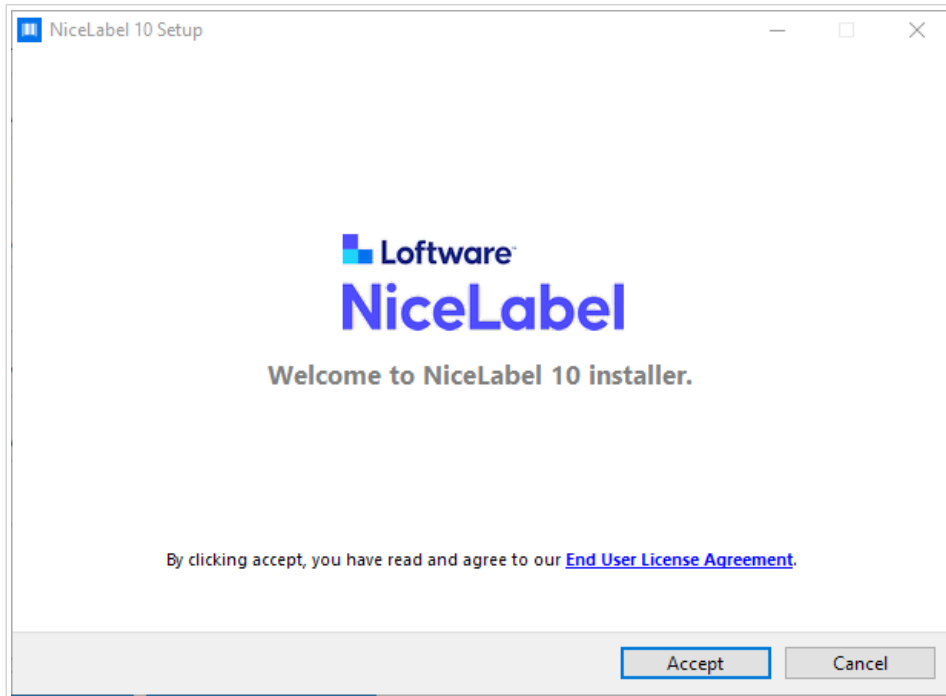
2. Select installation language from the drop-down list and click **OK**.



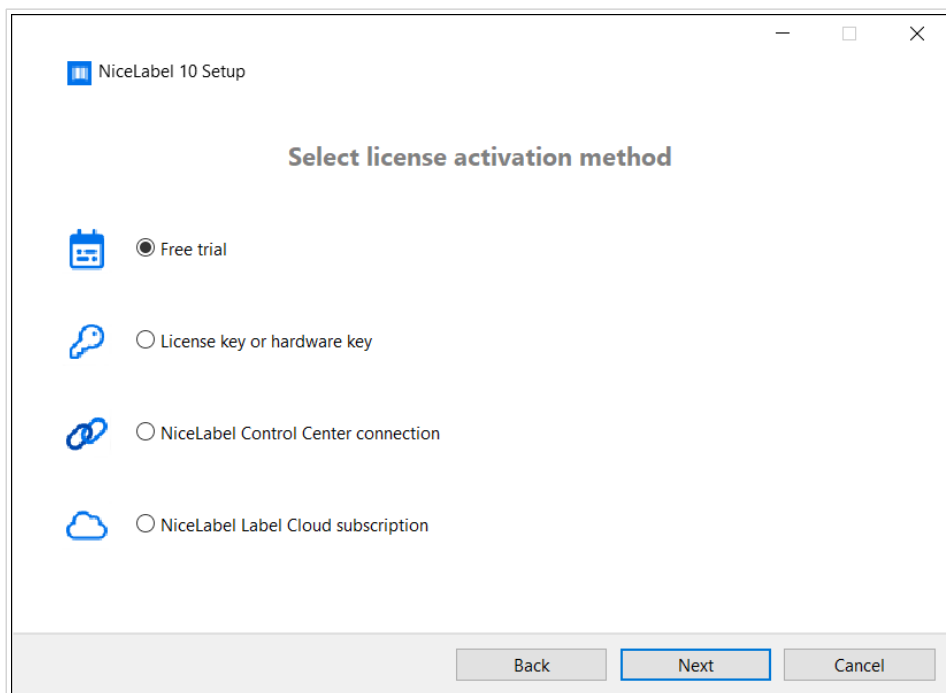
NOTE

Language selection determines the interface language of the installed NiceLabel NiceLabel 10 program.

3. NiceLabel NiceLabel 10 Setup dialog window opens automatically. Click **Next**.



4. Read and accept the **End User License Agreement**.
Click **Accept**.
5. Select the license activation method. These options are available:

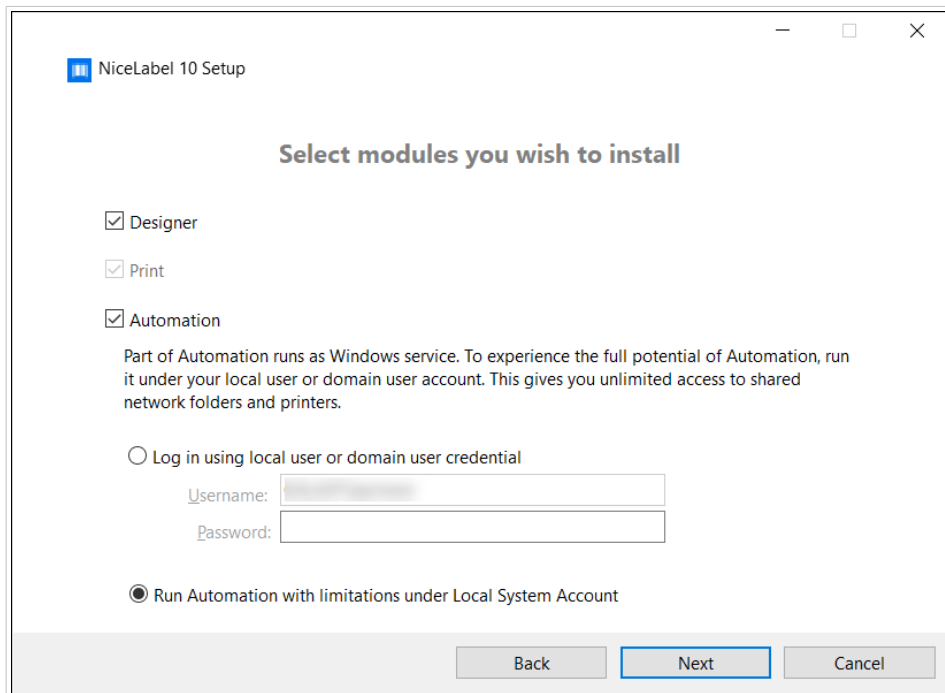


- **Free Trial**. Free trial allows you to use and evaluate the software for 30 days. After the completed trial period, you have to purchase and enter the license key to continue with your work.
- Activate license. Choose among these options:

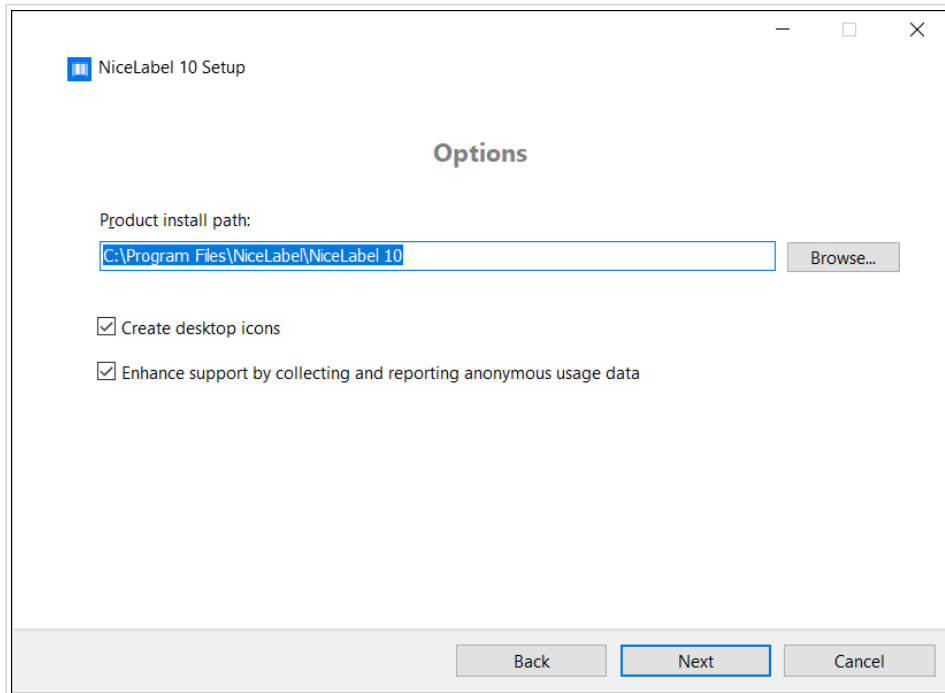
- Setup with [License Or Hardware Key](#). Use this option if you have already purchased and received the product license key. The entered license key determines which product edition of the installed NiceLabel 10 software is going to be fully functional after the finished setup.
- Setup with [NiceLabel Control Center connection](#). Use this option if you have a running Control Center in your company and wish to activate your copy of NiceLabel 10 with the same license key. This also adds your installed copy to your company's Label Management System (LMS).
- [Software Cloud](#) subscription. This option installs NiceLabel 10 on your computer and establishes a connection with Software Cloud.

1.3. Free trial setup

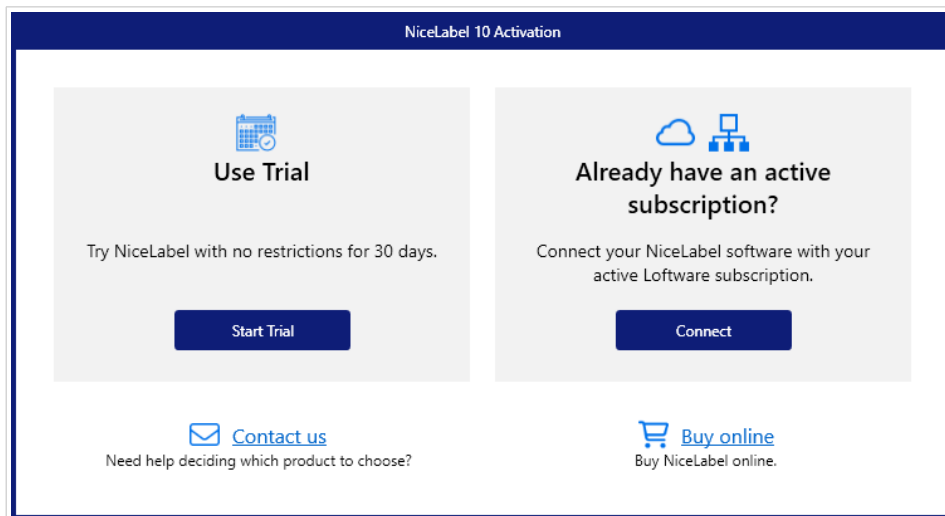
1. Complete the [Section 1.2, "Introductory setup steps"](#).
2. Select the modules you wish to install.



3. Select how you are going to run Automation.
4. Define the installation path and decide if you want to share your usage data with NiceLabel or not. Anonymous usage data helps NiceLabel improve the applications and therefore increase your productivity.



5. Click **Next** to continue. You are ready to install NiceLabel NiceLabel 10.
6. Start the installation. Click **Install** to install NiceLabel on your computer.
7. Run NiceLabel NiceLabel 10. The initial trial dialog window opens:

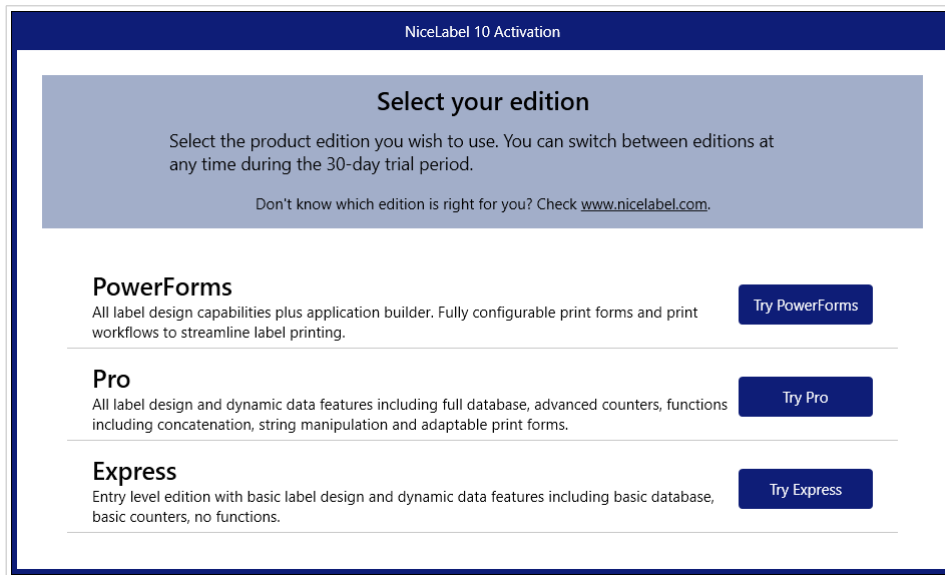


These options are available:

- Click **Start Trial** to start with your 30 days trial period.
- Click **Activate** to activate your purchased license. Activation enables you to start using the software without time limitations. Read about your activation options in the following sections:
 - [Setup with License Center](#)
 - [Setup with Control Center](#)

- [Setup with License Key Or Hardware Key](#)

8. After clicking **Start Trial**, the NiceLabel NiceLabel 10 product level selection dialog window appears:



9. Select which product level you wish to evaluate:

- **PowerForms** allows you to design responsive labels and print forms that streamline printing and eliminate errors. This is the most comprehensive product level with the richest feature set.
- **Pro** allows you to design and print responsive labels with dynamic content. For demanding users.
- **Express** allows you to quickly design and print universal label templates. Simplicity and efficiency are the main characteristics of this product level.

The NiceLabel NiceLabel 10 landing page opens. After you decide to activate NiceLabel NiceLabel 10, click **Activate License** in the **Software Information** section. This opens the [NiceLabel NiceLabel 10 activation dialog](#).

1.4. Setup with license key or hardware key

1. Complete the [Section 1.2, "Introductory setup steps"](#).

2. Enter your **License key**. Your license key is included in the email that was sent to you after completing the purchase or in the product package.

The alternative is to select **License is on a hardware key** option. An additional way of distributing the license keys is sending them on USB drives.

USB drive carries licensing information for your copy of NiceLabel NiceLabel 10. Plug the USB drive into your computer and click **Next**.



NOTE

Hardware key can only be used for single-user licenses. As a result, only Desktop Designer module is installed during a hardware key setup of NiceLabel NiceLabel 10.



TIP

In specific deployment cases – i.e. when installing NiceLabel NiceLabel 10 in multi-user environments – license key can be read from the installation file name. To achieve this, rename the installation file using the following format: **Setup_XXXX-XXXXX-XXXXX-XXXXX-XXXXX.exe** ("X" marks the license key characters). NiceLabel NiceLabel 10 is automatically configured to use this license.



NOTE

The Automation module is deselected by default if you install NiceLabel NiceLabel 10 using a hardware key.



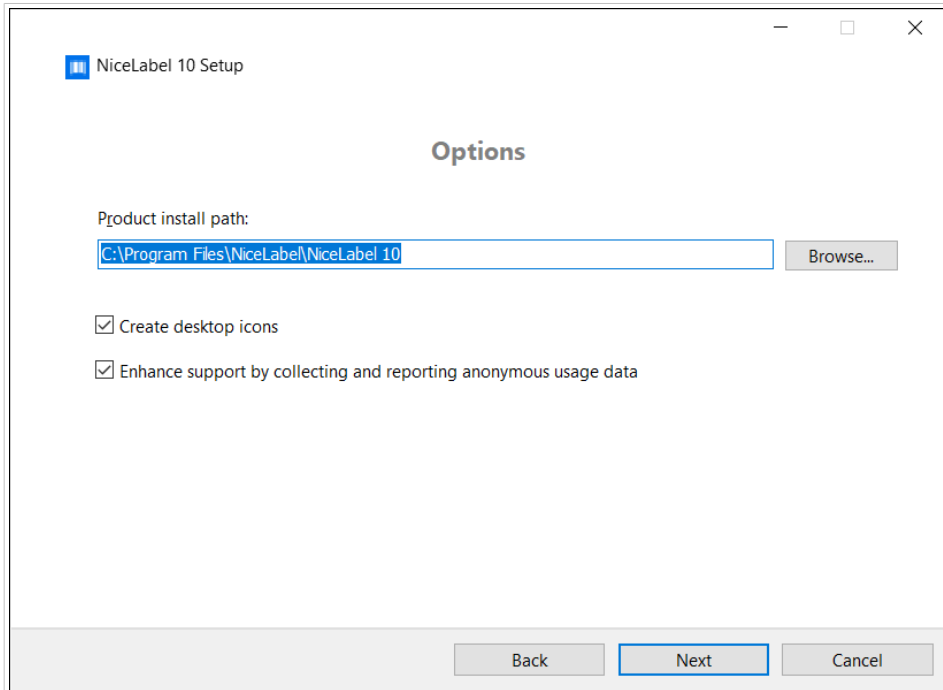
NOTE

The previously entered license key determines which product levels run in trial mode and which without time limitations. It also defines which NiceLabel Desktop Designer product level (Express, Pro, or PowerForms) is available for use.

3. Select the modules you wish to install.

The screenshot shows a Windows-style dialog box titled "NiceLabel 10 Setup". The main heading is "Select modules you wish to install". There are three checked checkboxes: "Designer", "Print", and "Automation". Below these is a paragraph of text: "Part of Automation runs as Windows service. To experience the full potential of Automation, run it under your local user or domain user account. This gives you unlimited access to shared network folders and printers." There are two radio button options: "Log in using local user or domain user credential" (which is currently unselected) and "Run Automation with limitations under Local System Account" (which is selected). The "Log in using local user or domain user credential" option has two input fields: "Username:" and "Password:". At the bottom of the dialog are three buttons: "Back", "Next", and "Cancel".

4. Define installation path and decide if you want to share your usage data with NiceLabel or not. Anonymous usage data helps NiceLabel improve the applications and therefore increase your productivity.



5. Click **Next** to continue. You are ready to install NiceLabel NiceLabel 10.
6. Click **Install**. The installation begins.
7. Run NiceLabel NiceLabel 10. If your license is a Label Management System (LMS) license, the Connect to Control Center window opens. Use this window to connect to your Control Center.

Example

<http://yourcontrolcenter/EPM/>



NOTE

Activation is required to work with the software without time limitations. It also enables NiceLabel company to provide you with customized support and help.



NOTE

If NiceLabel NiceLabel 10 has been installed with a predefined product level (a specific installer file has been used), product level selection is not required during the first start.

1.5. Setup with Control Center

If you are running the NiceLabel Label Management System (on-premises LMS) in your company, you can activate your copy of NiceLabel NiceLabel 10 by connecting to your Control Center. This also pairs your NiceLabel NiceLabel 10 installation with Control Center and makes it part of your company's LMS.

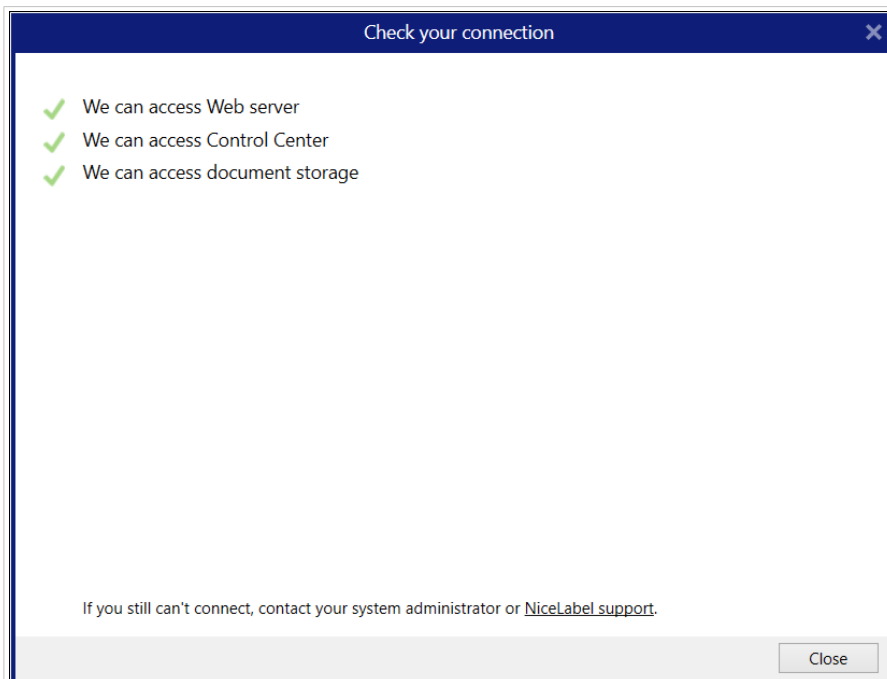


NOTE

You cannot connect and activate NiceLabel NiceLabel 10 using an inactive Control Center. Activate Control Center first.

Read more about the benefits of using NiceLabel LMS [here](#).

1. Complete the [Introductory Setup Steps](#).
2. After the NiceLabel NiceLabel 10 activation window opens, click **Connect**.
3. Type the URL address of your Control Center. To check if your Control Center is accessible, click **Check connection**.
 - The **Check your connection window** opens.
 - The status indications tell you if your Control Center is accessible or not.



NOTE

To connect to your Control Center, you need a working Internet connection. If your Control Center is behind a firewall, open the outbound ports.



NOTE

If you are experiencing connection issues, follow instructions from the dialog.

4. Click **Connect**. Your NiceLabel NiceLabel 10 is now active and ready.



IMPORTANT

If your Control Center uses the application authentication, the sign-in window appears first. Authenticate yourself using your Control Center credentials.

Application authentication

Log in to use the application:

User name:

Password:

Show password

1.6. Post-trial options

The free trial allows you to use and evaluate the software for 30 days. After 30 days, the trial period ends. This means that you can no longer use NiceLabel NiceLabel 10 software without purchasing the license and activating the license key.

When opening NiceLabel NiceLabel 10 in the post-trial time period, a dialog window appears. The following options are available:

- Click **Extend Your Trial** to prolong the trial period if you need additional time to evaluate the software. Click **Extend Your Trial** to fill out an online form. NiceLabel support will inform you about the trial extension in the shortest possible amount of time.
- Click **Connect** to activate your purchased license. Choose how to activate your license:
 - **Sign in**. The default License Center link (`license`) is already inserted. Click **Sign in**.



Signing in to License Center for the first time activates your subscription. See more about License Center in our [dedicated publication](#).

- [Section 1.5, “Setup with Control Center”](#). Use this option if you have a running Control Center in your company and wish to activate your copy of NiceLabel 10 with the same license key. This also adds your installed copy to your company's Label Management System.
- [Section 1.4, “Setup with license key or hardware key”](#). Use this option if you have already purchased and received the product license key. The entered license key determines which product edition of the installed NiceLabel 10 software is going to be fully functional after the finished setup.

1.7. Version updates

The set of NiceLabel NiceLabel 10 features is constantly expanding. NiceLabel recommends you to always install and use the latest available version of NiceLabel NiceLabel 10. To achieve this, update your existing installed version with the latest one. New versions are regularly published and distributed.

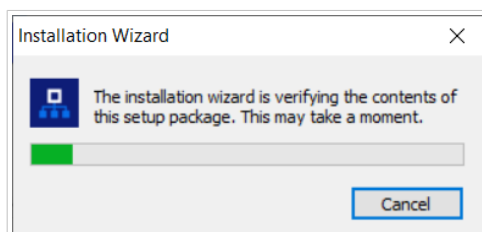


TIP

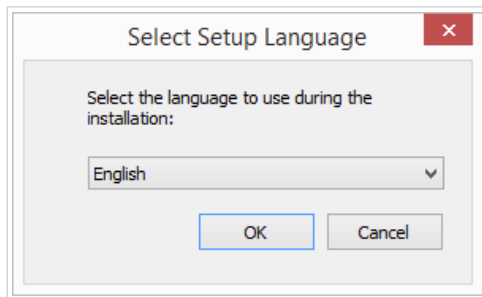
When updating to the latest version, do not remove the existing version of NiceLabel NiceLabel 10 manually. The update process removes it automatically and seamlessly installs the latest version. Licensing data is retained and the application is ready to use.

Complete these steps to update your existing version of NiceLabel NiceLabel 10.

1. Download the software package. Run **NiceLabel10.exe**. The installer verifies the installation package content.



2. Select the installation language from the drop-down list and click **OK**.



NOTE

Language selection determines the interface language of the installed NiceLabel NiceLabel 10.

3. NiceLabel NiceLabel 10 Update window appears. Click **Next**.
4. Installer automatically removes existing version.
5. When done, the installer confirms that the latest version is successfully installed. Click **Close** and continue with your work.

1.8. Enforcing configuration options

Certain application configuration parameters can be stored and retrieved during the installation procedure from the **product.config** file. This is an XML file that among others stores the parameters for language selection, directories, usage tracing, licensing information, and global variables.



NOTE

After the installation of NiceLabel NiceLabel 10, **product.config** file is stored in folder `c:\ProgramData\NiceLabel\NiceLabel 10\`.

The **product.config** file allows you to enforce configuration setting as the application is being installed. Use the **product.config** file from a computer with already installed NiceLabel NiceLabel 10 and deploy it on additional computers.

To do so, follow the steps below:

1. Open NiceLabel NiceLabel 10 Desktop Designer.
2. Set the application configuration options (go to **File > Options**) and close it.
3. Copy the **product.config** file from `c:\ProgramData\NiceLabel\NiceLabel 10\` next to the installation executable.

4. Run setup. The **product.config** file is automatically copied to the `c:\ProgramData\NiceLabel\NiceLabel 10\` folder.



NOTE

Configuration options that relate to a specific user profile, override the parameters from **product.config** file.

1.9. Silent installation

The silent installation allows you to install NiceLabel NiceLabel 10 without user interaction. The silent way of installing represents a convenient and quick way to streamline the installation process, especially if you are installing NiceLabel NiceLabel 10 on multiple computers in your company, or repeating the installation as part of your information infrastructure maintenance.



NOTE

Performing silent installation requires a skilled system operator. Use silent installation only if you are familiar with all installation parameters.

To install NiceLabel NiceLabel 10 in silent mode:

1. Open command prompt.
2. Navigate to the folder where you keep the NiceLabel NiceLabel 10 installation file.
3. Run command `NiceLabel10.exe /s`.
4. Wait for a few minutes. Your NiceLabel NiceLabel 10 is ready.

To uninstall NiceLabel NiceLabel 10 in silent mode:

1. Open command prompt.
2. Navigate to the folder where you keep the NiceLabel NiceLabel 10 installation file.
3. Run command `NiceLabel10.exe /s MODIFY=FALSE REMOVE=TRUE UNINSTALL=YES`.
4. Wait for a few minutes. Your NiceLabel NiceLabel 10 is gone.

There are additional useful silent mode installation options that you can use, for example logging, selection of language, selection of installed modules, etc. In all cases, open the command prompt, and navigate to the folder where you store your NiceLabel NiceLabel 10 installation file. See the options [here](#).

2. NiceLabel 10 licensing

There are two licensing models available for NiceLabel 10:

1. **Single-user license** grants the end-user the right to use one instance of NiceLabel 10 on a single workstation. In this licensing model, the end-user is allowed to use an unlimited number of printers from the workstation with the activated copy of NiceLabel 10 license. Each workstation must be activated with its own unique license key. You must obtain as many license keys as necessary to cover the number of your workstations.



NOTE

Single user license is available with the following NiceLabel 10 modules: Designer Express, Designer Pro, Designer Pro, and Print.

2. **Multi-user license** allows installation and usage of unlimited instances of NiceLabel 10 on an unlimited number of workstations. In this licensing model, the number of printer seats is limited. The end-users are allowed to use as many printers as purchased with the respective NiceLabel product.



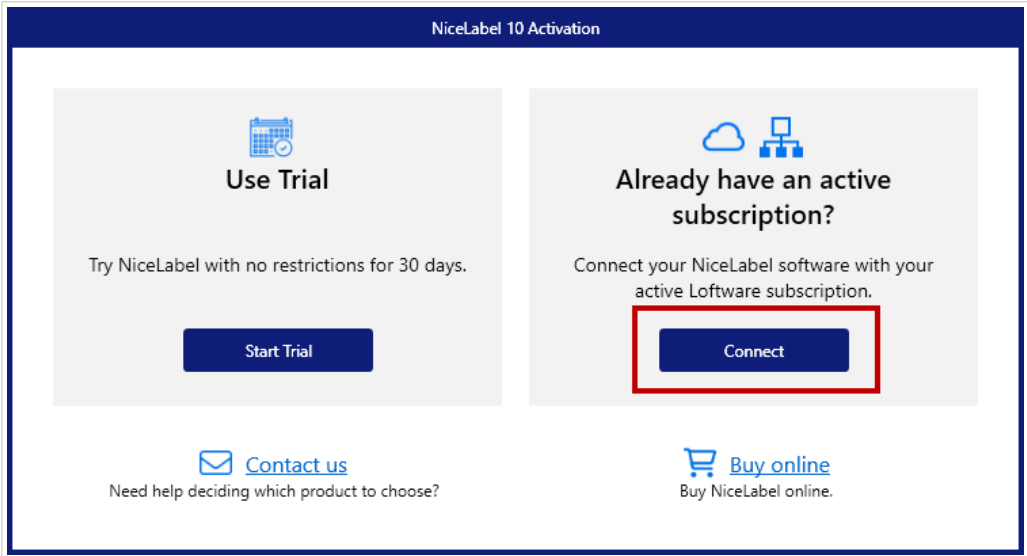
TIP

Details about NiceLabel 10 licensing are available in a [dedicated document](#).

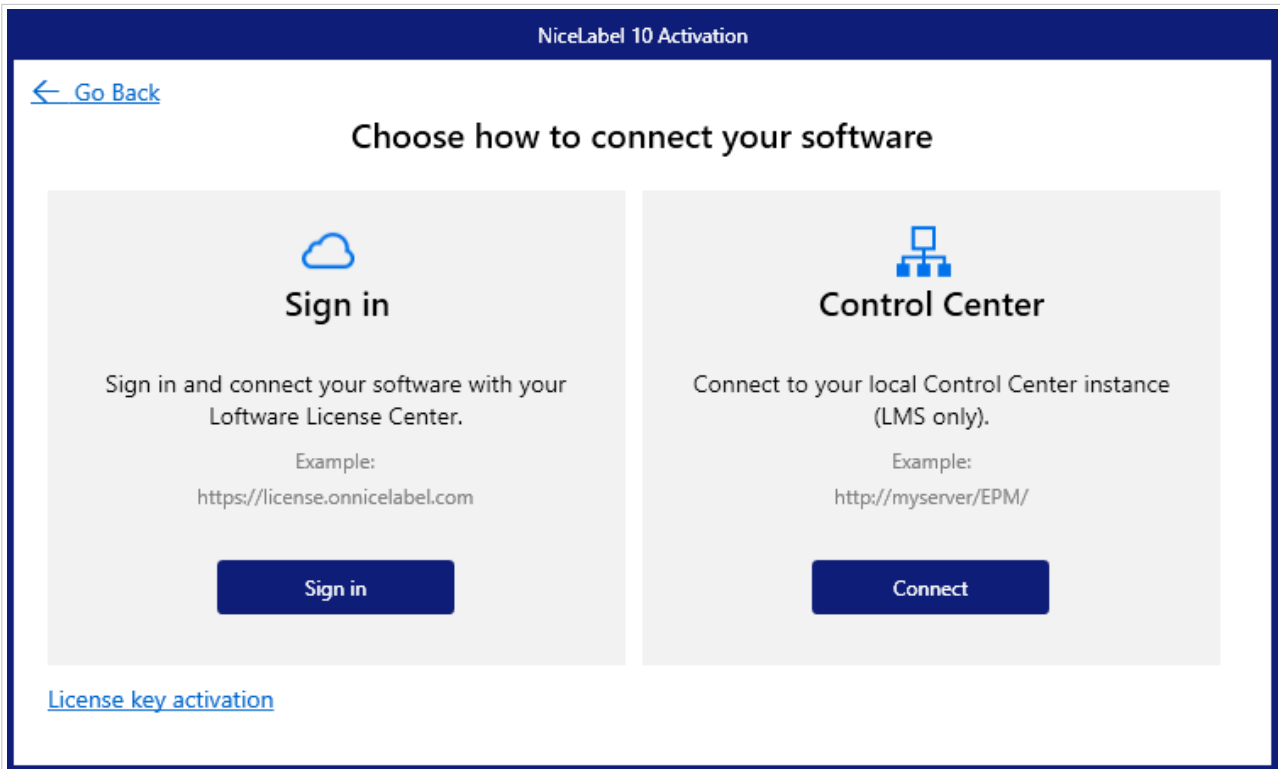
2.1. Licensing options

When you install NiceLabel NiceLabel 10, you can run it in trial mode, or activate your license. Only activated copies of NiceLabel NiceLabel 10 software allow you to work with all included modules without time limitations.

To activate your license, open NiceLabel NiceLabel 10. The **Activation** window opens. Click **Connect**.

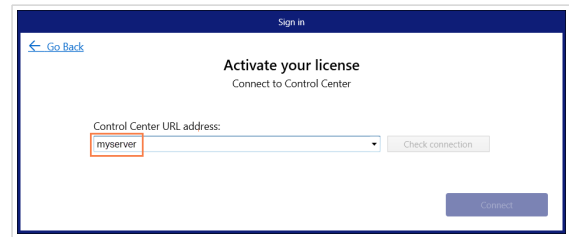
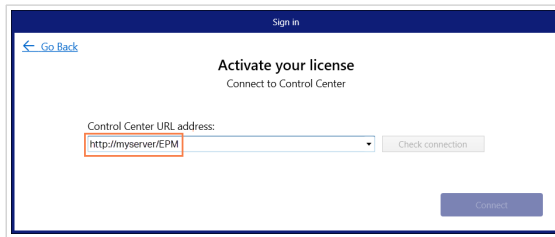


A new window opens with 3 activation options.



Select your activation type by clicking **Sign in** or **Connect** under your option:

- **Control Center.** Type your Control Center URL or your Control Center server name,



Activate your Control Center license by clicking **Connect**.



NOTE

Before you connect to Control Center, you can click **Check connection** to make sure you are able to access the webserver, Control Center, and your Documents.

- **Sign in.** The default License Center link (`license`) is already inserted. Click **Sign in**.



Signing in to License Center for the first time activates your subscription.

See more about License Center in our [dedicated publication](#).

- **License Key.** Read [Section 2.2, "License key activation"](#) for detailed instructions.

2.2. License key activation



TIP

Information in this section is valid for the following NiceLabel NiceLabel 10 modules: Designer Pro, Designer PowerForms, Print, and Automation.

You receive the license key after purchasing the software from NiceLabel online store or from any of NiceLabel software distributors. To activate your copy of NiceLabel NiceLabel 10, open the [Section 2.2.1, "License activation dialog"](#) and use the received license key.



NOTE

By activating your copy of NiceLabel NiceLabel 10, the software also becomes registered. Registration guarantees full customer support as defined in the product license agreement.

With any NiceLabel NiceLabel 10 product open, the [Section 2.2.1, “License activation dialog”](#) window appears after clicking the **Activate your License** button in Desktop Designer or Automation **Home tab ribbon > Trial group** or in **File tab > About**.

2.2.1. License activation dialog

To activate and register your NiceLabel NiceLabel 10 license, complete the following steps:

1. Activate the license activation dialog in **File > About > Activate Your License**. The dialog window contains the following edit fields:
 - **License Key:** Copy and paste the 25-digit key that you received after purchasing the software.



NOTE

After purchasing the Runtime license, you only activate this license type in NiceLabel Print. If you try to activate Runtime license in Desktop Designer or Automation, the license is not recognized as valid.

- **Name:** Type your name. The name is used when addressing possible support issues and also used to identify the owner of label or solution design.
- **Company:** Company name helps identify upgrade requests and possible support issues.
- **Country/region:** Defines macro location of the company HQ or its office.
- **Email:** User email used for support purposes or addressing possible issues.
- **Notify me about future software updates:** Keeps you informed about the regular updates of NiceLabel NiceLabel 10 products.

Preloading the activation information

To speed up the license activation process, you can preload your user information using command-line parameters or the `product.config` file.



NOTE

The procedures below are for experienced administrators only.

To preload licensing user information using command-line:

1. Open command prompt.
2. Navigate to the folder where you keep the NiceLabel NiceLabel 10 installation file.
3. Run command `NiceLabel10.exe` and add parameters for the activation information edit fields. Use syntax from the example below.

Example

```
NiceLabel10.exe LICENSECODE=12345abcde12345abcde12345
ACTIVATIONNAME=yourname ACTIVATIONCOMPANY=yourcompany
ACTIVATIONCOUNTRY=United States
ACTIVATIONEMAIL=youremail@nicelabel.com
ACTIVATIONUPDATESNOTIFICATION=TRUE
```

To preload the user licensing information using your `product.config` file:

1. Install a fresh copy of NiceLabel NiceLabel 10 on any of your computers. Make a copy of the NiceLabel NiceLabel 10 `product.config` file for editing. The file's default location is `%PROGRAMDATA%\NiceLabel\NiceLabel 10`.
2. Edit the copy of the `product.config` file. The file has an XML structure. Add user licensing info items in the `<Activation>...</Activation>` node:

- `<LicenseKey>...</LicenseKey>`
- `<Name>...</Name>`
- `<Company>...</Company>`
- `<Country>...</Country>`
- `<Email...</Email>`
- `<UpdatesNotification>...</UpdatesNotification>`

Example:

```
<?xml version="1.0" encoding="utf-8"?>

<Configuration>

<Common>

...

</Common>

<Activation>

    <LicenseKey>ABCDE12345ABCDE12345ABCDE</LicenseKey>

    <Name>John</Name>

    <Company>Doe</Company>

    <Country>United States</Country>

    <Email>john.doe@nicelabel.com</Email>

    <UpdatesNotification>True</UpdatesNotification>

</Activation>

</Configuration>
```

3. Store the `product.config` next to the NiceLabel NiceLabel 10 installation file. This can either be a folder on a computer, on a shared network drive, or on a USB drive. Use a location that makes your installations convenient.
4. Run the installation file. During the license activation, the user information populates automatically.

2. When done with entering the required information, click **Activate Your License**. The activated NiceLabel NiceLabel 10 product becomes fully functional in accordance with the provided license key.

2.3. License upgrade



TIP

Information in this section is valid for the following NiceLabel NiceLabel 10 modules: Designer Pro, Designer PowerForms, Print, and Automation.

License upgrade procedure does not require any software (re)installation procedures. Continue with the current version of NiceLabel NiceLabel 10 installed.

To upgrade an existing license, the following two keys are required:

- 25-digit license key of the installed edition. You received this key after purchasing your copy of NiceLabel NiceLabel 10.
- 25-digit software upgrade key. This key upgrades your current edition of NiceLabel NiceLabel 10.

After the upgrade, the "old" software key becomes deactivated.



TIP

NiceLabel NiceLabel 10 licenses (LMS) can also be centrally managed using NiceLabel Control Center. See the dedicated Control Center installation guide for details.

2.3.1. Upgrade Types

There are three types of upgrades available for NiceLabel NiceLabel 10. They are described in the following sections:

- [Section 2.3.2, "Product edition upgrade"](#): This type of upgrade expands the amount of product features and widens the possibilities of use.
- [Version Upgrade](#): If you are updating from the previous to the current major version (release), use this upgrade type.
- [Section 2.3.4, "Upgrade number of printers"](#): The use of NiceLabel NiceLabel 10 products is licensed per connected printers. This type of upgrade expands the permitted number of printers to be used with the software.

2.3.2. Product edition upgrade



IMPORTANT

To upgrade your product edition, contact your Software partner or [our support team](#).

If you use the License key, read the instructions below.

When upgrading to a higher edition of NiceLabel NiceLabel 10 software, for example from Designer Express to Designer Pro, you keep the existing product installed on your computer. Installation and activation of the alternative edition is done on top of the existing one.

1. Go to **File (backstage) tab > About**.
2. Click **Upgrade License**. The upgrade license dialog window appears:
 - **License Key:** Field is automatically populated with the existing license key.
 - **Upgrade Key:** Enter the upgrade key.

contact us.' There are two input fields: 'License Key' (pre-filled with a blurred key) and 'Upgrade Key' (empty with a red asterisk indicating it's required). A 'Upgrade License' button is at the bottom right. At the bottom left, it says 'Internet connection is required. [Activate offline](#) if the internet is not available.'"/>

3. Click **Upgrade License**. Your copy of NiceLabel NiceLabel 10 product has been upgraded. See the new **License** in **About > License Information**.

2.3.3. Version upgrade

Due to constantly improving NiceLabel applications, we recommend that you upgrade your copy to the latest product version. Contact your NiceLabel reseller to receive the upgrade key.



NOTE

When purchasing version upgrade, always give your NiceLabel reseller the license key of your current version.



NOTE

If you are upgrading version and increasing the number of permitted printers at once, make sure you upgrade the version first. See the steps below. When done, continue upgrading the number of printers. See the procedure in section [Upgraded Number of Printers](#)).

There are two upgrade cases:

- You can upgrade the existing installation on a single or multiple computers.
- You can install NiceLabel NiceLabel 10 on a clean computer and use the upgrade key for activation.



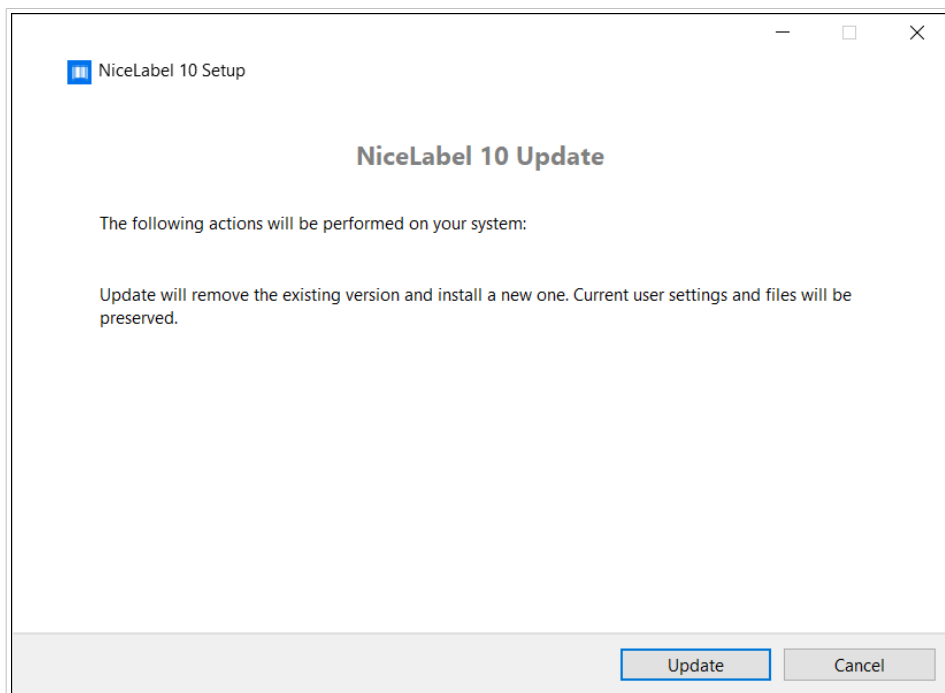
TIP

When installing NiceLabel NiceLabel 10 on multiple computers, it is recommendable to make the installations uniform. NiceLabel NiceLabel 10 installer allows you to predefine language selection, directories, usage tracing, licensing information, and global variables. The procedure is available in the section [Enforcing Configuration Options](#).

2.3.3.1. Upgrading the existing installation

If you have your existing installation(s) activated with a single-user or multi-user NiceLabel license, perform the upgrade using these steps:

1. After receiving the **Upgrade Key** from your NiceLabel reseller, [download](#) and run the NiceLabel NiceLabel 10 installation file.



Click **Update**. Installer removes your current version and installs the latest.



NOTE

Current user settings, files and activation information remain preserved during the upgrade.

2. Click **Close** when the setup procedure ends.
3. Run NiceLabel NiceLabel 10 . The **NiceLabel NiceLabel 10 Activation** window opens. The License Key field is already populated with your license key from the previous version. Copy and paste the **Upgrade Key** from the email you received from your NiceLabel reseller.

4. Click **Upgrade License**. Now, the upgrade of your NiceLabel NiceLabel 10 is done. See the new **License** in **About > License Information**.

2.3.3.2. Installing and activating NiceLabel NiceLabel 10 with upgrade key

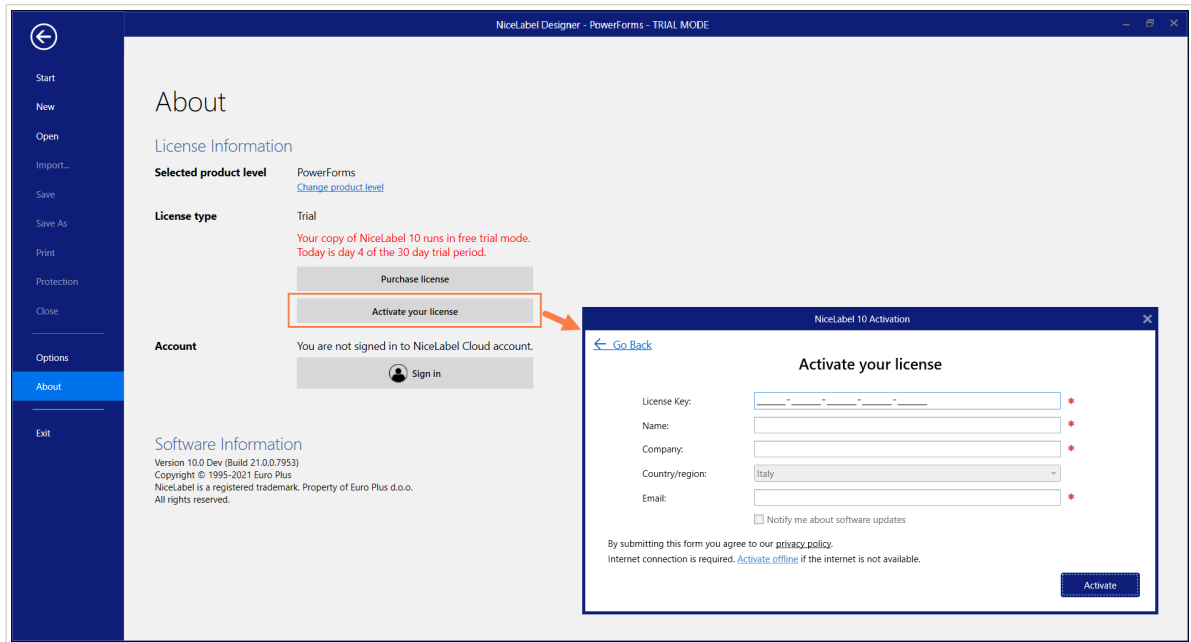
If you have a multi-user NiceLabel license, you might want to install and activate NiceLabel NiceLabel 10 on additional computers with the upgrade key.

1. After receiving the **Upgrade Key** from your NiceLabel reseller, [download](#) and run the NiceLabel NiceLabel 10 installation file.
2. Complete the [Free Trial Setup](#).
3. When done, go to **File > About** and click **Activate your license**. The **NiceLabel NiceLabel 10 Activation** window opens.
4. Copy and paste your **Upgrade Key** to the **License Key** field.

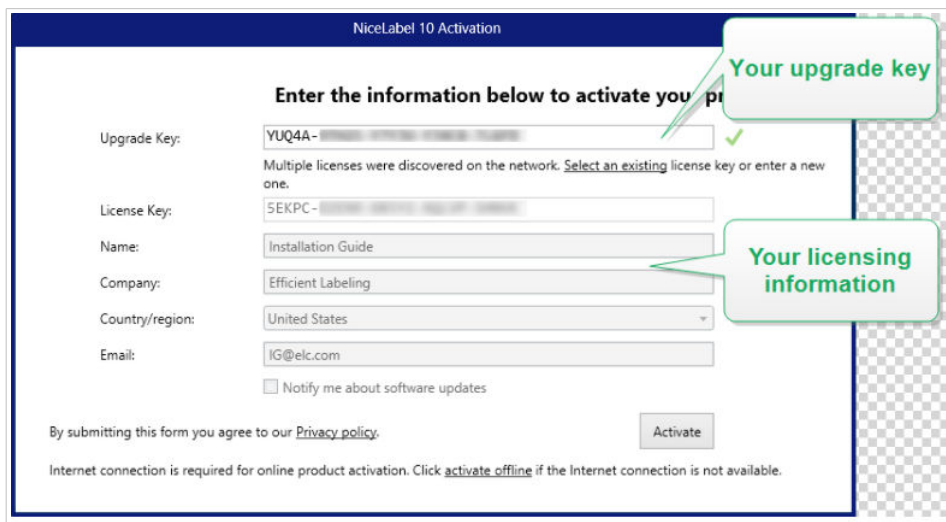


NOTE

You must not paste your "old" license key in the **License Key** field. Please use the upgrade key for NiceLabel NiceLabel 10 .



The NiceLabel NiceLabel 10 Activation fields adapt to the pasted upgrade key automatically. These fields display the licensing information that you used while activating your copy of previous version.



5. Click **Activate**. Activation is complete. Click **OK** to restart NiceLabel NiceLabel 10 and start working.

2.3.4. Upgrade number of printers



IMPORTANT

To upgrade your license, contact your Software partner or [our sales](#).

If you use the License key, read the instructions below.

This type of upgrade allows you to increase the permitted number of printers that are used for label printing. Complete the below-described steps.



TIP

The upgraded number of printers allows you to follow the pay-as-you-grow pricing model. Printing capacity needs to grow along with the growth in business – upgrade the license only when needed. Complete the procedure below to gain access to the additional number of permitted printers.

1. Open any NiceLabel NiceLabel 10 product.
2. Go to **File (backstage) tab > About** and click **Upgrade License**.
3. NiceLabel NiceLabel 10 license activation dialog window opens.
 - **License Key:** The field is already populated with the currently used **License Key**.
 - Enter the purchased **Upgrade Key**.

4. Click **Upgrade license**. The number of permitted printers has been expanded. See the new **License** in **About > License Information**.

3. Installing printer drivers

For detailed and printer vendor/model-specific instructions on how to install printer drivers, read the [Software Printer Driver Installation Guide](#).



NOTE

Before starting with printer driver installation, make sure you are logged in as a user with permission to install the driver.

4. Deactivating software

When using NiceLabel NiceLabel 10 software activated with a software license key, you can deactivate it and move the license to another workstation.



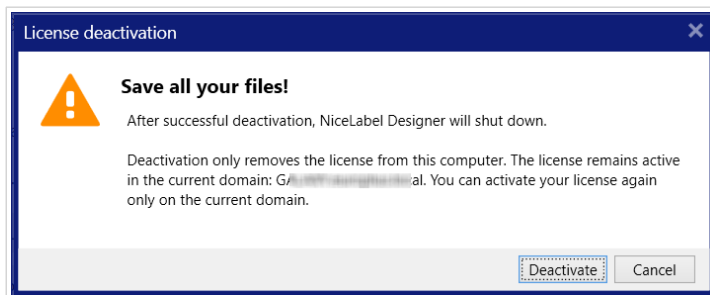
NOTE

With NiceLabel multi-user products, you can install an unlimited number of NiceLabel clients. The license unit for NiceLabel multi-user products is a printer seat. Each unique printer that you use for label printing consumes one license.

4.1. License deactivation procedure

To deactivate the NiceLabel license, do the following:

1. Start any NiceLabel NiceLabel 10 program.
2. Go to **File > About** and click **Deactivate License**. License deactivation warning window opens.



3. Click **Yes** to deactivate the license or **Cancel** to abort the deactivation procedure.
4. The single-user license has been deactivated and can be again activated on another workstation.



TIP

Another possibility to deactivate NiceLabel NiceLabel 10 is to uninstall it. During the removal process, you will be prompted whether you want to remove the license or not.

4.2. Moving software licenses to another computer

NiceLabel NiceLabel 10 runs on every computer on which it has been activated. The software can be activated using a software or hardware key (license key stored on a USB drive).

4.2.1. Moving Hardware Activation

To move the hardware key to another computer, complete the following steps:

1. Disconnect the USB hardware key from your computer.
2. Install NiceLabel NiceLabel 10 on the new computer. See section [Introductory setup steps](#).
3. Plug the USB drive into another computer. The installed copy of NiceLabel NiceLabel 10 is active.

4.2.2. Moving Software Activation

To move the license to another computer using a **software key**, complete the following steps:

1. Run any NiceLabel NiceLabel 10 product on the currently active computer.
2. Go to **File > About** and click **Deactivate License**.
3. Select the option **Deactivate License**. Follow the procedure as defined in the section [Deactivating software](#). Selecting this option removes the license from your computer and stores it back on the activation server.



NOTE

The computer must have access to the internet to be able to transfer the license back to the activation server.

4. Install the software on the new computer. See section [Introductory setup steps](#).
5. Activate the software on the new computer. See the section [Activating your license](#).

5. Uninstalling NiceLabel Desktop Designer and Automation

You can uninstall NiceLabel Desktop Designer and Automation the same way as most other Windows applications.

Both Desktop Designer and Automation uninstalls simultaneously.



NOTE

If you want to upgrade NiceLabel Desktop Designer and Automation, you don't need to uninstall the programs. Just run the latest installation file.

1. If you use a software license key, first [deactivate your license](#).
2. On your computer go to your **System Settings > Apps & Features** (Add or remove programs).
3. Find and click NiceLabel 10.
4. Click **Uninstall**.
5. Follow the wizard to uninstall your program.

Desktop Designer and Automation are now removed from your system.