

the professional
labeling software



NiceLabel PowerForms Web User Guide

Rev 14-07

www.nicelabel.com



Euro Plus d.o.o.
Poslovna cona A 2
SI-4208 Šenčur, Slovenia
tel.: +386 4 280 50 00
fax: +386 4 233 11 48
www.nicelabel.com
info@nicelabel.com

COPYRIGHTS

Copyright © 1995-2014 Euro Plus d.o.o. All rights reserved.

www.europlus.si

www.nicelabel.com

Information in this document is subject to change without notice. The software described in this document is furnished under a license agreement or nondisclosure agreement. The software may be used or copied only in accordance with the terms of those agreements. No part of the publication may be reproduced, stored in a retrieval system, or transmitted in any form or any means electronically or mechanically, including photocopying and recording for any purpose other than the purchaser's personal use without the written permission of Euro Plus d.o.o.

Euro Plus d.o.o.
Poslovna cona A 2
SI-4208 Šenčur
Slovenia

www.europlus.si

TRADEMARKS

NiceLabel[®], NiceLabel Pro[®], NiceForm[®], NiceMemMaster[®], NiceData[®], NicePrint[®], NiceLabel Printer Driver[®], NiceLabel Designer Express[®], NiceLabel Designer Standard[®], NiceLabel Designer Pro[®], NiceLabel PowerForms Desktop[®], NiceLabel Control Center Pro[®], NiceLabel Control Center Enterprise[®], NiceLabel Automation Easy[®], NiceLabel Automation Pro[®], NiceLabel Automation Enterprise[®] are trademarks or registered trademarks of Euro Plus d.o.o. in the U.S.A. and other countries. Microsoft and Windows are registered trademarks of Microsoft Corporation. Other brands and their products are trademarks or registered trademarks of their respective holders and should be noted as such.

Table of Contents

1. Introduction	1
1.1 About this Manual	1
1.1.1 Typographical Conventions	1
2. Architecture.....	2
3. Configuring NiceLabel Control Center	4
3.1 Introduction to NiceLabel Control Center.....	4
3.2 Control Center User Interface.....	4
3.3 Working with Web Printing Users	5
3.4 Using the Document Storage	7
3.5 Configure Authentication	8
4. Designing Solutions to Print on Web	10
4.1 Designing Labels	10
4.2 Designing Forms.....	12
4.3 Creating Solutions	14
4.3.1 Compose Your Solution.....	15
4.3.2 Analyze Your Solution for Problems	16
4.3.3 Deploy Your Solution to Document Storage	17
4.4 Sample Solution Provided with the Software	18
4.5 Additional Notes	19
4.5.1 Using solution files and workflow step management.....	19
4.5.2 Logout from your solution	19
4.5.3 Using external label templates	20
4.5.4 One-click live translation of PowerForms Apps	20
5. Printing Labels on the Web	22
5.1 Configuring Web Printing Users	22
5.2 Providing Login Data to Web Printing Users.....	23
5.3 Checking Prerequisites	23
6. Technical Support.....	25
6.1 Online Support.....	25
6.2 Contact Information.....	25

1. Introduction

1.1 About this Manual

This User Guide helps you install and integrate NiceLabel PowerForms Web into your enterprise IT environment.

The User Guide contains the following sections:

Introduction: Introduces the NiceLabel PowerForms Web software and lists the contents of the package.

Architecture: Learn about NiceLabel PowerForms Web basics and understand its architecture.

Configuring NiceLabel Control Center: Learn about NiceLabel Control Center user interface and configuration.

Designing Solutions for Web Printing: Learn to design label formats and printing applications, then learn to create and publish solutions online.

Printing Labels on the Web: Learn about important set up steps before the solution can be used on the Web.

Technical Support: Contacting technical support.

1.1.1 Typographical Conventions

Text that appears in **bold** refers to menu names, file names are written as **SETUP.EXE** and user interface buttons are described as **OK**.

Text that appears in *italic* refers to confirming actions such as *Read only*, locations such as *Folder*, or software window names.

Text enclosed in <Less-Than and Greater-Than brackets> refers to keyboard keys such as <Enter>.

Variables are enclosed in [brackets].

2. Architecture

NiceLabel PowerForms Web is a server/client based solution primarily designed for barcode label printing from Web browsers without any locally installed NiceLabel software.

NiceLabel PowerForms Web is available as an add-on to NiceLabel Control Center Pro or NiceLabel Control Center Enterprise. You must already have one of Control Centers installed, before you can install NiceLabel PowerForms Web. NiceLabel PowerForms Web will reuse the existing Control Center and its database, and will add the Web label printing capabilities.

On design workstations, users use NiceLabel PowerForms Desktop clients for label and application design. Then NiceLabel Solution Architect application is used to create the solution file; this is the application for label printing for the Web printing user.

The design clients are provided with the NiceLabel Control Center license. NiceLabel PowerForms Web license key will provide license for web printing users.

NiceLabel PowerForms Web environment consists of the following components:

- **Server components:** NiceLabel Web Printing Site. This component runs as Web site within IIS. You can install it next to the existing Control Center, or on a different server.
- **Design components:** NiceLabel Solution Architect. This component will take labels and form application created by NiceLabel PowerForms Desktop and create a Web application of them.
- **Client print prerequisites.** Before the printing application can run in a browser, its digital signature must be validated on the system. Prerequisites install Euro Plus' certificate into Trusted Publishers store.

When you activate the NiceLabel PowerForms Web license inside the Control Center, that Control Center will enable the Web printing options. Then you are able to define login parameters for Web printing user and the solution that will run in their browsers.

All printing activities are logged in the NiceLabel Control Center database. The administrator can use a standard internet browser to control the Control Center, manage licenses, access solution files in the Web-based storage repository (Document Storage), set up and manage Web printing users, assign solutions to users, and view their printing history.

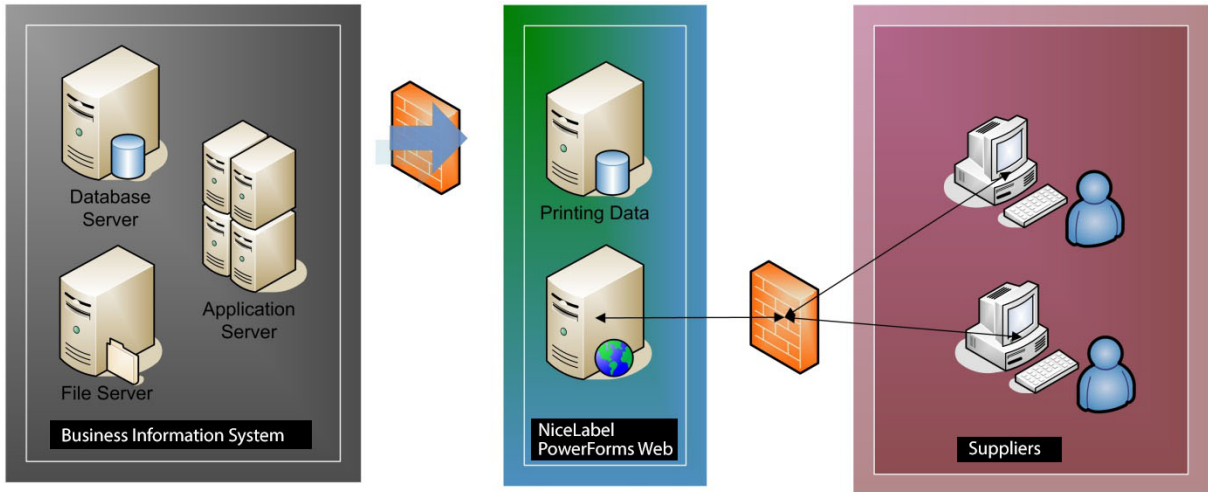


Figure 1: NiceLabel PowerForms Web Architecture

For details about the installation and configuration process, please refer to the **NiceLabel PowerForms Web Installation Guide**.

3. Configuring NiceLabel Control Center

3.1 Introduction to NiceLabel Control Center

NiceLabel Control Center is a Web application used to manage NiceLabel users (designer, desktop printing users and Web printing users) in an enterprise environment. The application NiceLabel Control Center is the main component of NiceLabel Control Center Pro and NiceLabel Control Center Enterprise products.

When you add NiceLabel PowerForms Web license into the existing Control Center, the Web printing options will become available. The administrator can define Web printing users and assign which solution runs when the user logs in. As well as see the label printing events executed by the Web users.

Note: Before you can access NiceLabel PowerForms Web related options in the Control Center, you have to activate the NiceLabel PowerForms Web license key. For details see the NiceLabel PowerForms Web Installation Guide.

The main features of Control Center from the Web-printing perspective are:

- You can run printing applications in the browser without any locally installed NiceLabel software.
- All label printing processing takes places locally in the browser, not on the server. The print job is created on your computer.
- You can print to local printer or server-shared printers.
- You can use Document Storage in the Control Center as a common repository for all files.
- You have central print and event logging in the Control Center.
- The same Control Center is used to manage all NiceLabel licenses, (1) for designers and (2) for Web printing users

3.2 Control Center User Interface

The NiceLabel Control Center user interface is displayed as a Web page. To access its functions, start your Web browser and point to the address of the server where NiceLabel Control Center is installed, for example:

`http://server/EPM`

where *<server>* represents the computer name where you installed the Control Center.

Note: If you have NiceLabel Control Center and the Web Printing site installed on the same Windows Server 2003 or Windows Server 2003 R2, the Control Center might not load

correctly. For additional explanation and available solution, see the [NiceLabel Knowledge Base article KB201](#).

NiceLabel Control Center default screen displays a welcome page, presenting the main operational choices to the user. Once the user makes this first choice, he is forwarded to the relevant functional area of the software. Navigation between these areas is possible with the use of tabs. Open a particular functional area by clicking on the corresponding tab. For example, if you want to see all printing-related events that occurred in your environment, click the **History** tab.

Note: For more information about NiceLabel Control Center, refer to *NiceLabel Control Center User Guide*.

3.3 Working with Web Printing Users

NiceLabel Control Center also has the role of a licensing server. Before any Web printing user can run his solution and print labels, the user with administrative privileges must add that user to the Control Center and configure his account.

Each active user will consume one Web printing license, even if he is currently not logged in.

When the user logs in, the Web printing application will run in his browser. When the same user logs in on another computer, the session for the first login is disconnected. Alternatively, you can enable multiple logins for each user account. In this case the same user account can be used by several users on their workstations. The previously opened sessions will not close and all users will run the same copy of the application.

By default, all user printing activities are logged in the database. For each printed label, there is an event stored in the Control Center. This allows the manager to see a history of label printing in the **History** tab. You can also generate reports based on the collected data. These reports are a valuable indicator of trends and comparisons and can display user activities in graphical or tabular form.

Edit client

Username:

Windows user

Password:

Confirm password:

E-Mail:

Solution: ...

Variables:

Log printing activities

Active

Number of logins:

IP filter:

OK Cancel

Figure 2: User configuration dialog box

To configure Web printing users, do the following:

1. Go to the **Administration** tab and select **PowerForms Web Clients**.
2. Click **Add new client**.
3. Fill in the required options.
4. The most important option after username and password is the Solution. This is the name of the solution file (.SLNZ) available in the Document Storage. When the user successfully logs into the Web Printing site, this solution as defined here will run. User cannot change the solution that will be in use; only the Control Center administrator can do it.
5. Make sure the option **Active** is enabled. If the user account is not active, the client cannot log in and run the solution.

Note: See the *NiceLabel Control Center User Guide*, the chapter *Configuration and administration > Administration > Web Clients* for details about user account options.

3.4 Using the Document Storage

The Document Storage is a Web file repository. It is installed together with NiceLabel Control Center on the same Windows Server. Document Storage allows label and form designers to store the label printing solutions to a central location available to all Web printing users. Technically, the files within the Document Storage are stored in the Microsoft SQL Server database that NiceLabel Control Center installer has created. The Document Storage can be operated very much like files on your local disk drive.

When a Web printing user logs into the Login page, the solution defined for his user account loads into a browser. The administrator defines the solution for each user. The solution designer must store the solution file (.SLNZ) in the Document Storage, or the solution will not load for the user.

The Document Storage is based on WebDAV technology and allows file sharing on the Web. Solution files in the Document Storage are accessible using the HTTP or HTTPS protocols. Using WebDAV ensures the solution designers can access the repository from anywhere (from the local company's network or any Internet location, provided the access to Document Storage is granted in the firewalls) and can upload solutions for Web printing users.

The shortcut for Document Storage is created on each design workstation which has NiceLabel design client activated with license from NiceLabel Control Center. You will find the shortcut in the *Favorites* section in each Windows file dialog box as **Storage Server**. The shortcut allows quick access to the frequent Document Storage users such as solution designers.

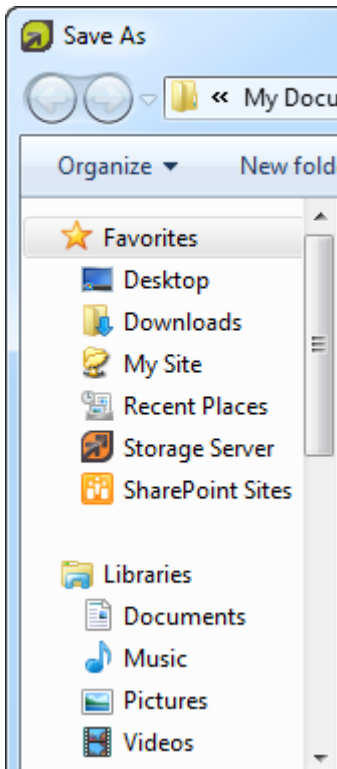


Figure 3: Shortcut to the Storage Server in the Favorites

The Document Storage can also be accessed by pointing your browser to the Control Center page, then selecting the **Document Storage** tab. Use the controls on the page to manage the files and folders in your Document Storage.

Dependent on the Control Center product that you have, you can also use the revision history control (versioning) and workflow approval steps.

3.5 Configure Authentication

After the installation, the access to the Control Center is not protected. Anyone aware of the existence of the Control Center can gain access. If the security standards of your company require a higher level of security to protect access to Control Center functionality, you can use the *NiceLabel authentication* feature.

The Control Center authentication feature applies to the management & designer users that will prepare the solutions for the Web printing users. To learn more about authentication for Web printing users, see chapter **Configuring Web Printing Users**.

Note: It is possible to customize limited access rights for users. A user's access can be limited to only certain subsections in the Control Center functionality, while the others remain inaccessible and hidden from them. You can also define file access permissions in the Document Storage.

Note: Before you enable the user authentication, make sure you have at least one user account added to the Administration profile, so you will not lock yourself out.

To enable the Control Center authentication feature, do the following:

1. Go to the Windows Server where NiceLabel Control Center is installed.
2. Go to **Start > All Programs > NiceLabel Control Center > Utilities > Control Center Configuration** to open the Configuration utility.
3. Select the **User rights and access** page in the *Control Center* settings group.
4. Click the **Authentication Mode** button to open the *Authentication mode* dialog.
5. Select one of the possible authentication modes:
 - **Windows authentication**, using Windows authentication system (local Windows users, or users from Active Directory).
 - **Application authentication**, using NiceLabel users, groups and profiles. These are the users defined in the same *Configuration utility > User rights and access > User configuration*.
 - **Mixed**, using either entities created in Windows and in NiceLabel application. **However, Control Center cannot use this authentication mode, it is used by other NiceLabel products.**

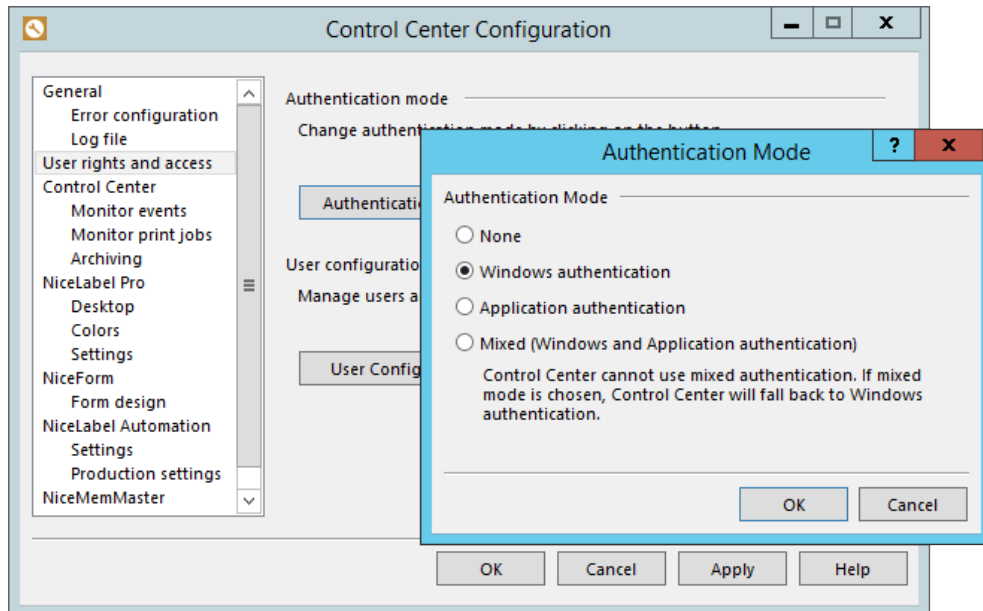


Figure 4: NiceLabel Authentication mode

Note: Windows authentication is the common choice.

6. Click **OK**.
7. Click the button **User Configuration**.
8. Expand the **Profiles** section. Each profile contains certain access policies and permissions to access the Control Center. Some profiles are already built-in, such as Administration, but you can define your own.

Note: Usually, administrators and solution designers will have access to the Control Center, so they can upload solution files and manage Web Printing users.

9. Double click the Administration profile to open its properties.
10. Go to **Members** tab.
11. Click the button **Add** to add new users into this profile. All members will have administrative privileges in the NiceLabel Control Center.
12. Click **OK**.
13. Close **Configure users**.
14. Click **OK**.

Note: Because you have enabled the authentication mode in step 5, the changes are applied immediately. Now only authorized users can access the Control Center.

4. Designing Solutions to Print on Web

Your NiceLabel Control Center product provides all designers you need to create the Web-printing solutions. You will use:

- The application **NiceLabel Pro** to create label templates (label files .LBL).
- The application **NiceForm** to create applications (form files .XFF).

Your NiceLabel PowerForms Web product additionally provides the application which converts labels and applications into a Web solution. You will use:

- The application **NiceLabel Solution Architect** to create the solution (file .SLNZ).

The foundation of any solution is a form application tailored to specific requirements. Each solution consists of at least one form. Usually, solutions provide the users with label printing on the Web, so label files are also a common part of the solution.

The design (color scheme, position of objects) and the functionality of each solution depend on the customer's requirements and the designer who creates them. With NiceLabel PowerForms Web, you receive a powerful application generator which does not require any programming skills to create a form-based applications. If the built-in features do not suffice, NiceLabel PowerForms Web includes Python programming language support, which that can enhance the possibilities of your solutions.

The solution contains everything needed for label printing.

The usual solution contents are:

- Forms: graphical application that the customer uses to control the activities
- Labels: label templates containing objects as text, image, barcode, etc.
- Images: images can be displayed on the form, or printed on the label

As part of the solution items, there are also connections to the databases. Usually, label printing data is already stored in some database. At print time the solution acquires data from the database, and based on the form design parameters and permissions, extracts the data and feeds it to label formats for printing.

4.1 Designing Labels

Label formats are components of the solution file.

NiceLabel Pro is a label design application and is included with your NiceLabel Control Center product in the client application NiceLabel PowerForms Desktop. It is usually installed on the computer which fills the role of a *designer*. To run NiceLabel Pro at least one printer driver must be installed on the computer. NiceLabel Pro is a user-friendly graphical designer which provides label design for templates of different complexities and usage, from undemanding mailing labels to complex chemical and logistic labels.

There are two main label format types:

1. **Fixed label:** In this case the label format includes fixed non-changeable design objects only. All printed labels are identical copies. Such label formats are used when the design and the contents never change.
2. **Variable label:** In this case, the label objects can be variable. The values for label objects are not hard-coded into the label design, but are dynamically allocated each time the label prints. Set of variables is defined for each label, such as *Product Name*, *Price*, *Description*, or *Bar Code*. Each variable object on the label is linked with a variable. When the variable is assigned with some value, the object displays the same value.

Using variable label design allows you to reuse the label formats to print labels for different products/needs and minimize label maintenance. It is a good practice to always use variable label design.

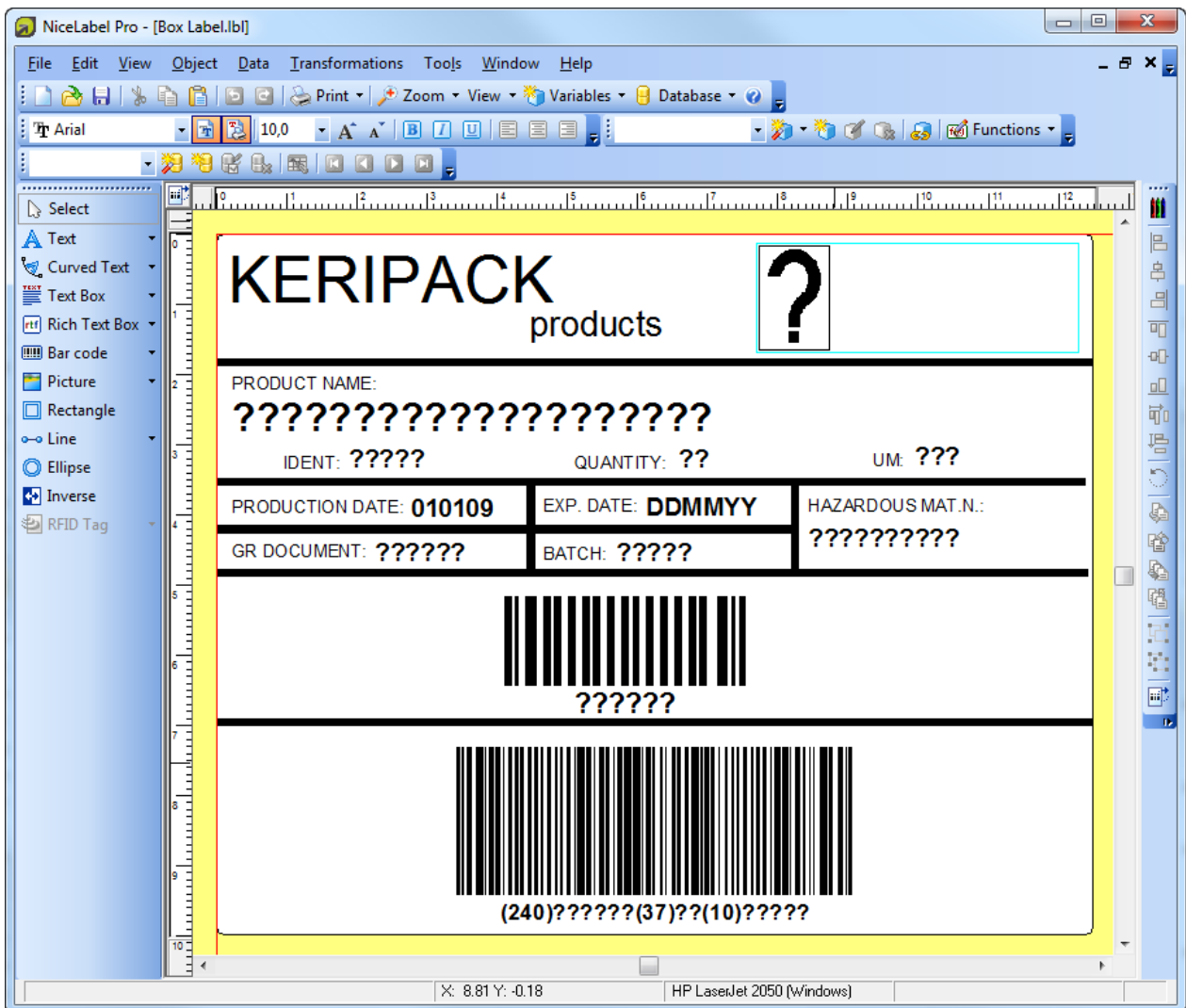


Figure 5: NiceLabel Pro, the label designer with the variable label design

For more information about how to design your label formats, refer to the following sources, available on NiceLabel Control Center DVD and online at the NiceLabel Web site:

- NiceLabel Pro User Guide
- Online tutorials

4.2 Designing Forms

Forms are key components of the solution file.

NiceForm is the form designer included with your NiceLabel Control Center product in the client application NiceLabel PowerForms Desktop. It is usually installed on the computer, which will serve as a *designer*. NiceForm is the application designer that gives you the power ability to create multi-screen front-end applications which run in the browser. No prior programming knowledge is needed to create your own application.

Because of its user-friendly graphical user interface, the learning curve with NiceForm is not steep. The idea behind NiceForm is to create a dedicated printing application for the Web printing user without needing a programmer's assistance. You don't need to be a power user to use NiceForm and create such an application.

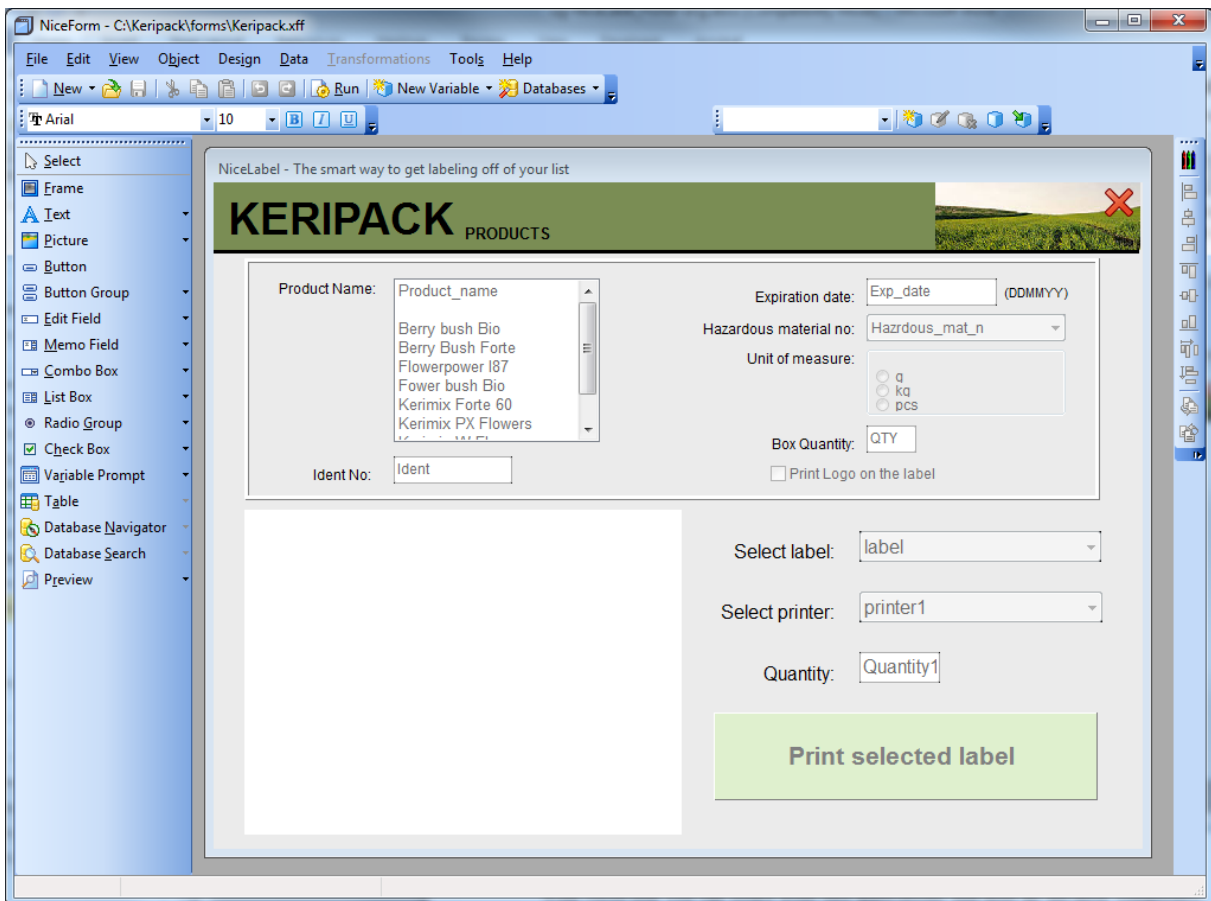


Figure 6: NiceForm, the form designer

With NiceForm you can create front-end applications which hide all the label complexity, variables and database connections from the Web printing user. All that is left is a clean, easy-to-use form application customized to the user requirements. A typical application will collect data from the user (or connect to the database to obtain the necessary data), it will preview the label format on screen for a visual check, and will present a *Print* button.

The form designer offers the standard form controls, such as edit fields, combo boxes (drop-down boxes), check boxes, tables with database data, and buttons. You can control the actions on the form. Usually, the actions are executed with a click of a button, but can be also based on a change of events in the form, or even timer-based.

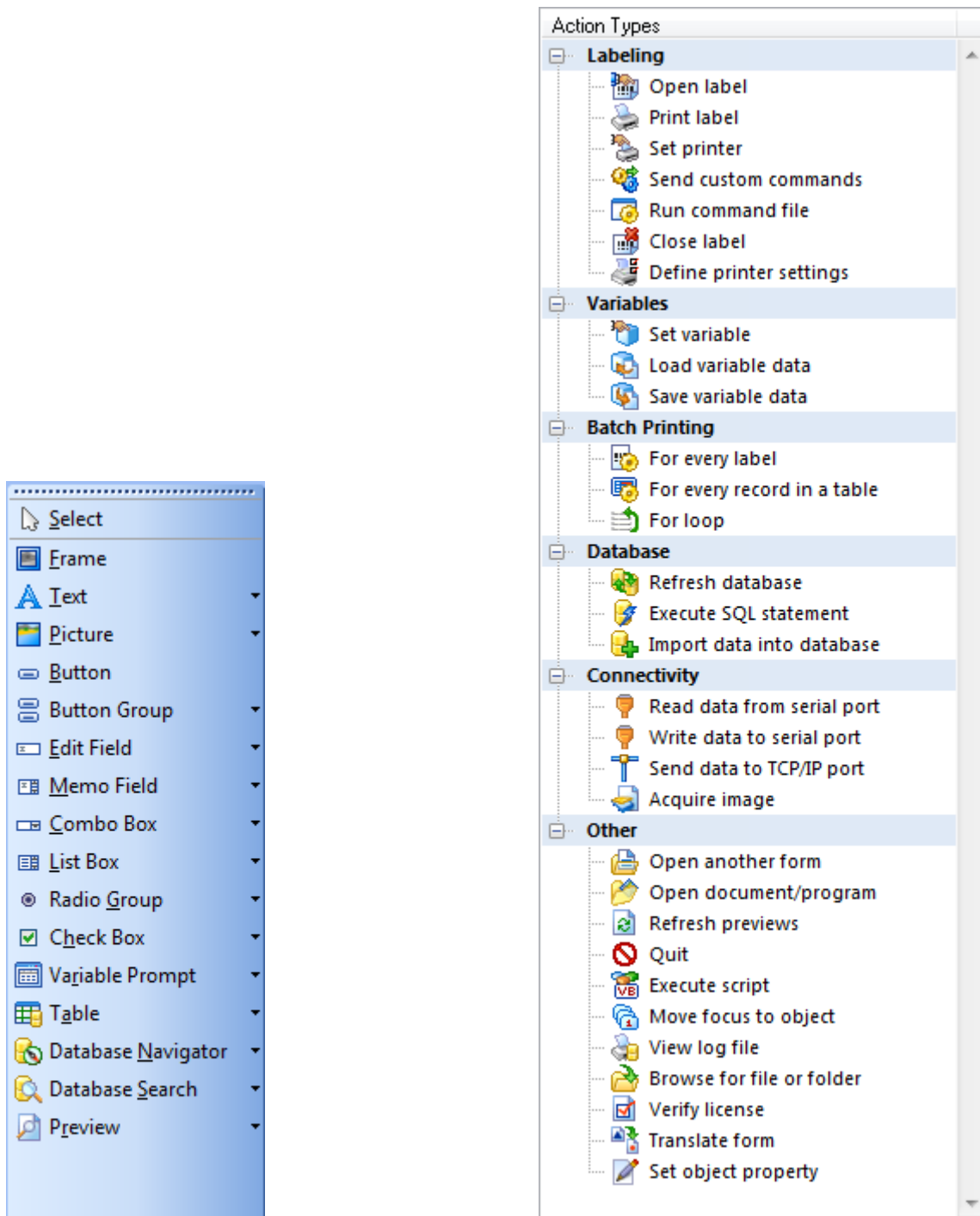


Figure 7: The available object (on the left) and the actions you can use in your applications

The list of actions includes standard actions, such as print label, open other form, change label printer, as well as executing program scripts, posting data into a database table, managing databases, writing data to disk, and others. The form usually prints labels, but can also execute non-printing actions.

Note: Some of the actions available in NiceForm on the desktop are not available when running the applications on the Web in NiceLabel PowerForms Web. The Solution Architect will warn you when you use unsupported features. For more information, see the NiceLabel [Knowledge Base article KB266](#).

NiceForm Quick Tutorial

The NiceForm allows the user to set values for variable label objects. These objects are linked to variables, so the solution designer's job is:

1. In NiceLabel Pro, create a label format that defines variables for variable objects on the label, such as *Product Name*, *Price*, *Description*, or *Bar Code*.
2. In NiceLabel Pro, create label objects, such as text, barcode or images and link them with variables. Variables will provide data for variable objects.
3. In NiceForm, import variables from the label.
4. In NiceForm, create objects, such as edit fields, combo boxes and check boxes, and establish a connection to the imported variables. The entered or selected data is stored in the variables and sent to the label.
5. In NiceForm, create label preview object and button object that contains the actions *Open Label* and *Print Label*.
6. In NiceForm, run the application to see if it operates as expected. Test-print the label.

Note: To make the job of the form designer easier, steps 3-5 are done by the built-in New Form Wizard. All that is left for designer to do is test the application, and change its design to match the enterprise standards.

Data Source for Variables

Once a variable label is designed, define the variable values with different data sources, such as manual entry (prompted fields), calculations done on the label, values assigned by another application, or set the data to be obtained from an existing data source.

Databases are common sources of data. You can configure NiceLabel PowerForms Web to obtain data from various database sources, such as Microsoft Excel spreadsheets, Microsoft Access file-based databases, Microsoft SQL Server, or any other database source.

Usually, you will create table object in the form and link it with the associated database table. Then, create the field mapping in table properties, and link the field from a database table with the respective variable. This ensures that the values from the selected database record will be stored in the appropriate variable in the form.

For more information about how to design your forms, refer to the following sources, some available on NiceLabel PowerForms Web CD and all available online at NiceLabel Web site:

- NiceForm User Guide
- Online 15-minute videos

4.3 Creating Solutions

Once you have created labels and forms, you have to create a solution file that will run online. You have to pack the files into a combined *solution file*. This is a compressed file which includes the label format, form layout and the application you have created.

While labels are created in the NiceLabel Pro label designer and forms are created in the NiceForm application designer, solutions are created in **NiceLabel Solution Architect**. The application is usually installed on the same computer, which already has NiceLabel Pro and NiceForm installed.


NiceLabel Solution Architect will take labels, forms and images and create the solution file (Web application) that you can run online in the browser.

To create a solution from your label and form files, follow the three phases in the Solution Architect. Select the label and form files for the solution, resolve any possible problems in the designs, and deploy the solution to the Document Storage.

4.3.1 Compose Your Solution

Select the items (label formats, forms and images) that will compose your solution.


1. Start **NiceLabel Solution Architect**.

2. Click the  **New** button to create a new empty solution. The *Solution items* pane above is empty. Add the items from the *File Explorer* pane below into the empty *Solution items* pane to add them into the solution.


Note: You can also open the existing solution file (.SLNZ), just make sure it was created on this workstation. When you open the existing solution, NiceLabel Solution Architect will refresh already defined items. It will search for these items in the original folders, from where you initially imported them. If the items or folders are not found, you will see the error message.


3. In the *File Explorer* pane, navigate to the folder where you have stored the items you wish to put into the solution.

Note: The solution can contain files of type label formats (.LBL), forms (.XFF) and images (.JPG and .PNG).

4. Select the item you wish to add to the solution and drag & drop the item into the Solution items pane, or click the  **Add items** button.


Note: You can use any Windows file manager (such as Windows Explorer) to drag and drop files into the *Solution items* pane.

5. Continue adding items until the solution contains all necessary items.
6. The best practice is to import the main form file first. Solution Architect will analyze the imported item and see if it links to any other files. All linked files will be imported automatically. For example: if you have a main menu form that opens other forms and prints several types of labels, all linked forms (.XFF) and label formats (.LBL) will be imported automatically, to save you time.
7. If you made a mistake and added an unnecessary item, remove it by either drag & dropping it out of the *Solution items* pane, or select it and then click the  **Remove items** button.

8. One form in the solution must be set as the default form. By default, the first imported form is default form. Select a new form and click the button  **Set as default form** to change the default form.


Note: The default form will automatically load for the Web printing user when he logs into the Web Printing site.

9. Hover your mouse over the item thumbnail to see details of the imported item.
10. If there is a problem identified in the imported item, the warning symbol will display over the thumbnail. Hover your mouse over the warning symbol to see the error description.

11. Click the  **Next** button to move to the next step.

4.3.2 Analyze Your Solution for Problems

This step allows you to resolve any problems that were identified in the solution.



If there is a problem with solution items (label formats, forms or images) you have added into your solution, the details about the problems will be displayed in the *Compatibility Issues* pane. All items in an error state are clearly marked with the  **Alert** symbol. The display in the *Compatibility issues* pane depends on the item selection in the *Solution items* pane:

- If no item is selected, the bottom pane displays alerts from all erroneous items.
- If one item is selected, the bottom pane display alerts for this item only.

Typically, alerts are reported because you have used some of the design features available in NiceLabel Pro or NiceForm, which are not available when printing labels on the Web.

Before you can use the solution on the Web, you have to resolve all of the reported problems.

To clear the alert state and clean up the solution, do the following:

1. Identify all items with the Alert symbol.
2. Select the item with Alert symbol then see the issues reported for it in the *Compatibility issues* pane.
3. Click the  **Open in designer** button to open the selected item (label format or form) in the designer; NiceLabel Pro for label formats and NiceForm for forms.
4. Resolve the problem in the designer.
5. Save the label format or form.
6. Go back to the **NiceLabel Solution Architect**.
7. Click the  **Refresh** button.
8. Repeat steps 2-7 until all alerts are resolved.



9. Click the  **Next** button to move to the next step.

4.3.3 Deploy Your Solution to Document Storage

In this step, you can preview the default form and deploy the solution to the Document Storage in the Control Center to be used by the Web printing user.

If there are still problems identified in the solution, the Solution Architect will warn you about them. Make sure to correct all the problems before continuing, or the solution will not work as expected.

To deploy the solution, do the following:

1. Make sure that all reported problems in the design of your label formats and forms are resolved. Click the **Refresh** button to make sure the latest items are imported in the solution.
2. Click the  **Save** button.
3. In the Save dialog box, navigate to the Favorites section and locate the  **Storage Server**.
4. Expand it to see the contents of the Document Storage.
5. Type in the solution name and save it.

If you do not see the Storage Server in the Favorites section, NiceLabel PowerForms Desktop on your workstation did not get the license from the Control Center server. To activate NiceLabel PowerForms Desktop, see the instructions in the User Guide file.

Alternatively, you can save the solution file to a local disk, then browse to your Control Center server and upload the solution using the controls in the Document Storage.

To open the Document Storage, open

`http://server/epm/DocumentStorage/AllItems.aspx`

where *<server>* is the name of your Windows Server, where the NiceLabel Control Center is installed.

Solutions with Global Variables

If your label formats use global variables, you will be able to upload their definition and current values to the Control Center. Each global variable in the label designer has a unique internal ID number. This number prevents global variables from overwriting each other. However, problems will likely occur if you design labels on several workstations, each with its own global variable settings.

Once you upload the global variables to the Control Center, you can manage them in *Control Center > Administration > Global Variables*.

Note: If you use global variables, the best practice is to create solutions and publish them to the Control Center from a single workstation. This will prevent overwriting of the global variables, which may happen if solutions are deployed from several workstations.

For more information about how to create your solutions with NiceLabel Solution Architect, refer to the following sources:

- Help file for NiceLabel Solution Architect

4.4 Sample Solution Provided with the Software

There is a sample solution included with NiceLabel PowerForms Web. The screenshots of label format and form depicted in the screenshots in this guide are from the sample solution. The sample will help you get started with NiceLabel PowerForms Web quicker.

The sample files are installed with your NiceLabel Control Center product in the standard *Samples* folder. The location of the sample folder depends on the type and language options of your Windows. By default, the folder is created in:

c:\Program Files\EuroPlus\NiceLabel 6\Samples

The files for the NiceLabel PowerForms Web sample solution are:

- In folder **Forms**, the file `Keripack.xff`
- In folder **Labels**, the files `Keripack-Box Label.lbl` and `Keripack-Package Label.lbl`
- In folder **Graphics**, the file `logo-nicelabel.jpg`

You can use the instructions in the previous chapters to open the files in designers (.XFF file in NiceForm, .LBL files in NiceLabel Pro) and see how they are constructed. To create a solution you can deploy for NiceLabel PowerForms Web, use NiceLabel Solution Architect and create the solution file (.SLNZ).

To help you get started quickly, the solution file has already been prepared. The solution file is:

- In folder **Labels**, the file `Keripack.slnz`

If you are eager to see this solution running on the Web, do the following:

1. Open Control Center, point to the

<http://server/EPM>

where *<server>* is the name of Windows Server where Control Center has been installed. Log in, if necessary. Contact your administrator for the correct URL.

2. Open **Document Storage** tab.
3. Use the Document Storage controls to upload the .SLNZ file.
4. Open **Administrator** tab, click **PowerForms Web Clients**.

Note: If you don't see this option, you haven't activated your PowerForms Web license in the Control Center yet.

5. Add new client. During the configuration associate the user with the uploaded solution file.

6. Open Web Printing site, point to

`http://server/WebPrinting`

where <server> is the name of Windows Server where Web Printing site is installed. Contact your administrator for the correct URL, it might be different.

7. Log in to the Web Printing site using the just-created user credentials.

Note: The first time you log in the Web printing site, you have to install the prerequisites. For details, see chapter **Checking Prerequisites**.

8. The application from the solution will run in the browser.

4.5 Additional Notes

4.5.1 Using solution files and workflow step management

If you bundle NiceLabel PowerForms Web with NiceLabel Control Center Enterprise product, you can enable the support for versioning (version control system) and workflows in the Document Storage.

When you have workflow support enabled for a particular folder, the Web printing user will always see the last approved version of the solution (.SLNZ) in this folder. If you want to test the draft version of the solution, you have to use such solution file outside of the workflow-enabled folder.

4.5.2 Logout from your solution

PowerForms Web supports true logout from the Web application.

To implement logout from your PowerForms Web solution, do the following:

1. Open your PowerForms application in **NiceForm** designer.
2. Open properties of your **Logout** button.
3. Go to **Events** tab.
4. Click **Actions** button.
5. Add the action **Open document/program**.
6. Select **Fixed document/program file name**.
7. Enter `~/Logout.aspx`
8. Click **OK** to close all dialog boxes.

The `~/` part instructs solution to open the link in same tab.

4.5.3 Using external label templates

Usually, your solution are self-sufficient, and will contain all forms and labels that you need for label printing. When the Web printing user logs in and downloads the solution locally, the access to the Document Storage is no longer needed.

However, in this case you have more work with solution maintenance. You have to re-generate the solution file and upload it to Document Storage, whenever:

- You must update some existing label template within a solution
- You must add some new label template to a solution

The solution file will update for the Web printing users, when they log in the next time after the update. Caching mechanism makes sure that users always have the latest solution.

When you have to frequently update the label template, but not the printing application itself, you can setup a solution to load label templates from external location, not from within the solution file. When you build a solution, just make sure that labels are not included in the solution. Then save the label templates (.LBL files) inside Document Storage.

Label template relative search order

The solution searches for the label templates in the following order:

1. Contents of the solution file.
2. The same folder in Document Storage, where solution files is stored.
3. Folder “. \Labels”. This is subfolder Label in the folder, where solution is stored.
4. Folder “. . \Labels”. This is folder “Label” defined in the same level as folder, where the solution is stored.

4.5.4 One-click live translation of PowerForms Apps

NiceLabel PowerForms Web applications can change the user interface language without the need to reload the form.

The **Translate Form** action updates the user interface of the current form. You can execute it on any actionable object or event. Typically, you define a drop-down box with a list of available languages, or display country flags. A value change in the drop-down box or a click on a country flag changes the language of the application.

It is also very convenient to navigate to the list of source strings for translation. During the form design, you can export all existing strings that you currently use by clicking a button and saving them to the structured text file. The text file has a table-like structure. Lines contain strings from the UI, and the columns represent translations in different languages.

You can open the file in any text editor. You can fill in the translations for the target language yourself, or use professional translation services.

```

"Source";"DE";"FR"
"Batch";"Charge / Batch";"Lot"
"Count";"Menge";"Dénombrer"
"Get your custom form now!";"Erstellen Sie sich jetzt Ihre individuelle Anwendung ""
"GTIN";"";""
"Label quantity";"Etiketten Anzahl";"Quantité d'étiquettes"
"Net Weight (kg)";"Netto Gewicht (kg)";"Poids net (kg)"
"NiceLabel PowerForms Samples";"NiceLabel PowerForms Beispiele";"NiceLabel PowerFor
"Offset days";"Tage Versetzt";"Décalage de jours"
"Print";"Drucken";"Imprimer"
"Printer";"Drucker";"Imprimante"
"Product name";"Produkt Name";"Le nom du produit"
"Production date";"Produktions Datum";"Date de production"
"Select language";"Spracheauswahl";"Sélectionner la langue"
"Smarter supply-chain label printing operations";"Intelligente Lösung zum drucken ""
"SSP";"";""

```

Figure 8: Sample of the translation file

The same translation file can be used with one or many forms. It can contain texts from all the forms that comprise your PowerForms application. The translation file will be automatically updated with any new text that you use in the form. Therefore, your only concern is to get your content translated.

5. Printing Labels on the Web

5.1 Configuring Web Printing Users

Once the label formats and form applications are designed and the solution file is deployed on the server, the solution is ready to be used by Web printing clients. NiceLabel PowerForms Web gives you the possibility to create Web printing applications and publish them online with ease.

Once the solution is deployed in the Document Storage, create the Web printing user that will have permissions to access the uploaded solution file.

Do the following:

1. Open **Control Center** in your browser. Open

`http://server/EPM`

where the *<server>* is the name of Windows Server where Control Center has been installed to.

2. If necessary, log in as user with administrative permissions.
3. Go to **Administration** tab.
4. Click **PowerForms Web Clients** in the left-hand navigation.
5. Click **Add new client**.
6. Provide in the mandatory data:
 - a. **Username.** Defines the account that the Web printing user will use to login to Web Printing site.
 - b. **Password**
 - c. **Confirm password**
 - d. **Solution.** Specifies the solution file (.SLNZ) that will run when this user logs in.
 - e. **Active.** The user account must be active so the user can log in. Each active account takes one NiceLabel PowerForms Web license.
7. Make sure you have defined the Web Printing user inside the *Control Center > Administration > PowerForms Web Clients*.
8. Make sure the correct solution is configured in the Web Printing user configuration. Each user can have one assigned solution from the Document Storage.

NiceLabel PowerForms Web user authentication can be handled using several methods. When you install Web Printing Site component, you can make a selection of your authentication type. For more details see NiceLabel PowerForms Web Installation and Deployment Guide.

5.2 Providing Login Data to Web Printing Users

Before Web Printing users can start the application, they must login to the Web Printing site. Upon the successful login the solution will download from the Control Center server into the user's browser, where it will execute inside Silverlight browser plugin.

You will have to provide the following to the each Web Printing user:

1. **URL link to the Web Printing site.** If in doubt, consult the administrator who installed the Web Printing site. By default, the URL is

`http://server/WebPrinting`

where the *<server>* is the name of Windows server.

2. **Username**
3. **Password**

5.3 Checking Prerequisites

Every time the Web Printing user logs in the system requirements are checked. The very first time the user might not have some important component installed. Once you take care of the prerequisites, the solution will run without question every next time.

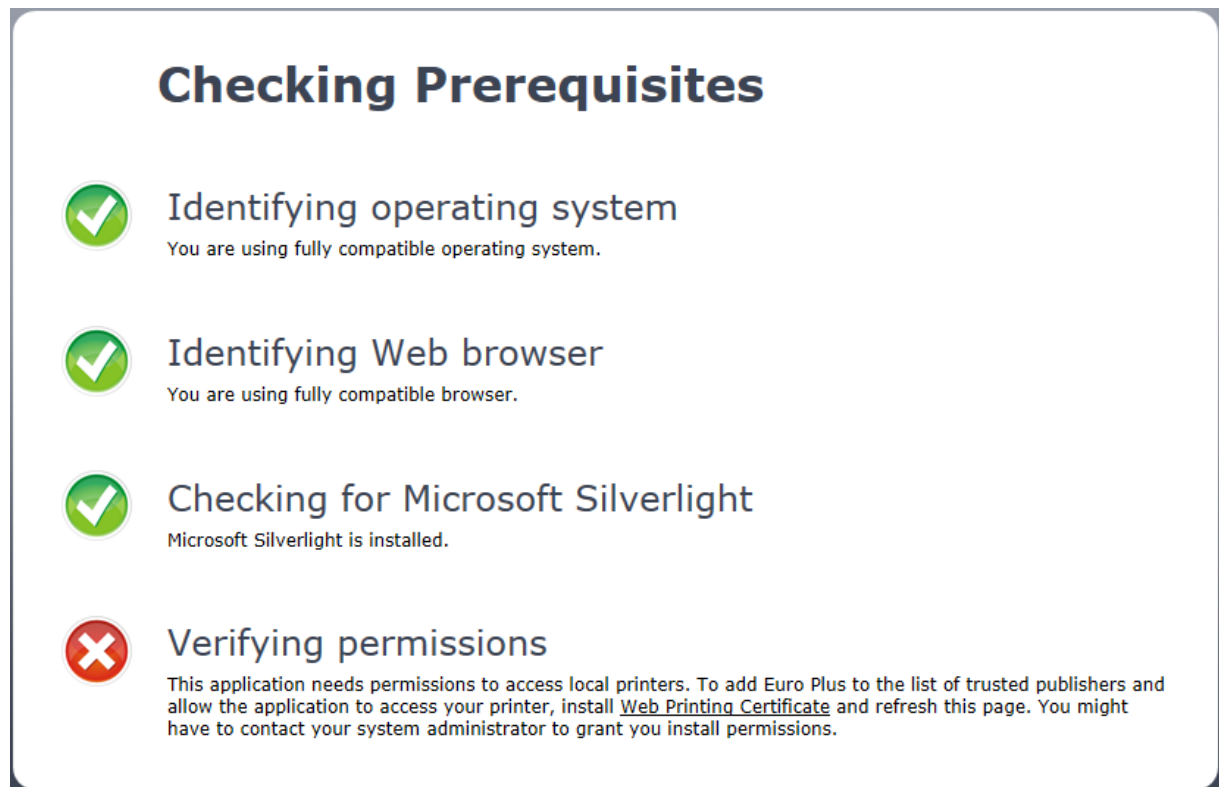


Figure 9: Checking for prerequisites

Resolve any issues with Silverlight and Web Printing Client Prerequisites installation, if they arise. The printing user must have installed Silverlight (add-on component from Microsoft) and must install the Web Printing Client Prerequisites in the browser.

Note: See the chapter *Installing Client Components for Printing User* in the NiceLabel PowerForms Web Installation and Deployment Guide for additional details.

6. Technical Support

If you experience any technical difficulties using NiceLabel software, refer to the built-in help, User guides and online Knowledge Base. If you are unable to solve the problem on your own, contact your local vendor, representative offices or NiceLabel technical support.

6.1 Online Support

You can find the latest builds, updates, workaround for common issues and Knowledge Base under the Support section on the product Web site at www.nicelabel.com.

For more information, see:

- Knowledge Base: <http://kb.nicelabel.com>
- NiceLabel user guides: <http://www.nicelabel.com/Learning-center/User-Guides>
- NiceLabel Tutorials: <http://www.nicelabel.com/Learning-center/Tutorials>
- NiceLabel Forums: <http://forums.nicelabel.com/>

6.2 Contact Information

For a list of local NiceLabel representatives, see <http://www.nicelabel.com/contact>.