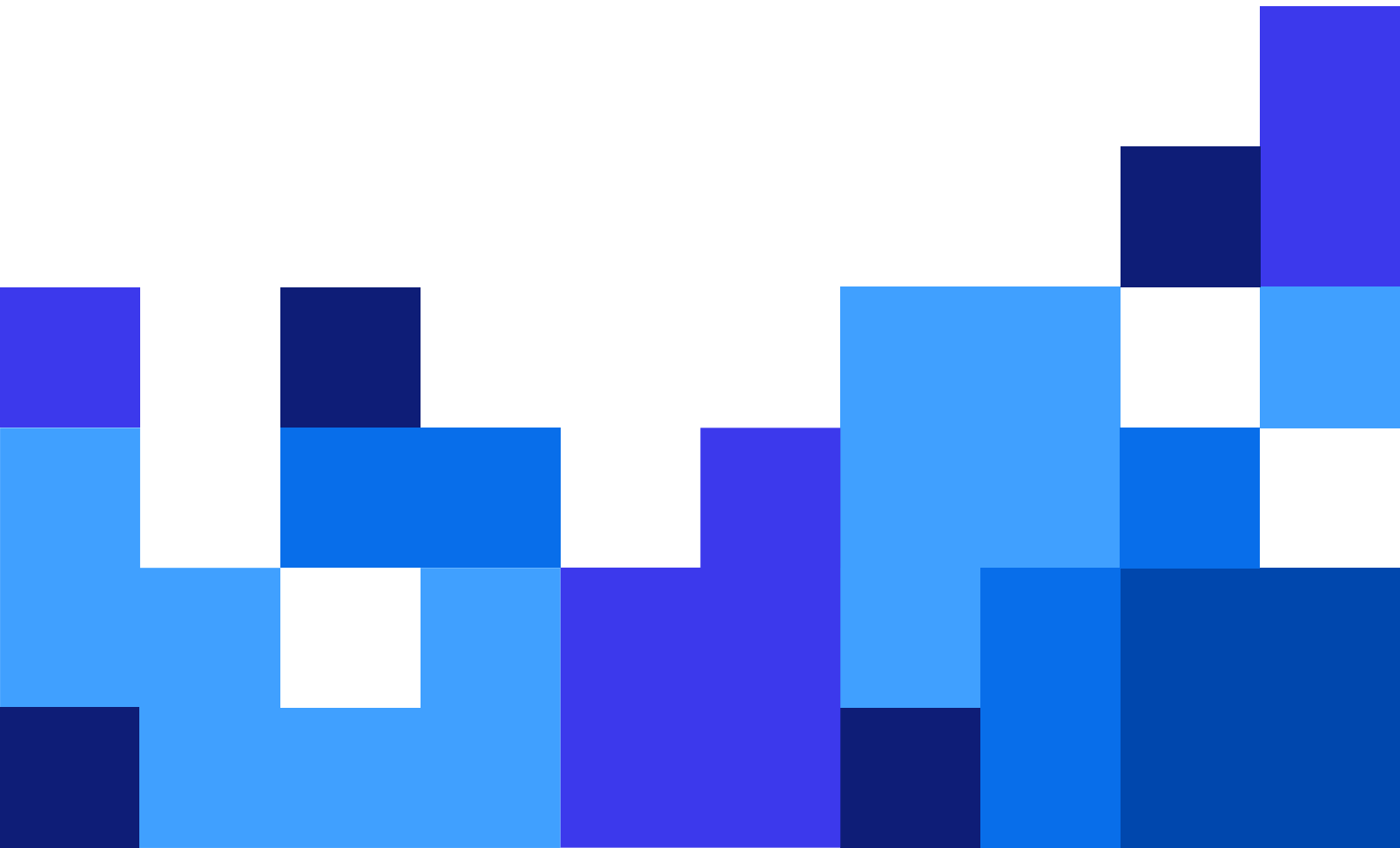


# Recall Only Driver User Guide

Rev-2024-3



# Table of Contents

<b>1. Introduction</b> .....	<b>3</b>
<b>2. Recall only drivers specifics</b> .....	<b>4</b>
2.1. Implementation procedure .....	4

# 1. Introduction

Loftware aims to provide driver support to all thermal and direct marking printers on the market. Our diverse market allows us to offer alternative options when developing full native drivers may not be optimal. When native Loftware drivers are unavailable for your printers, we also offer **Recall only drivers**.

Recall only printer driver processes allow you to seamlessly integrate your printers with NiceLabel during your project planning and implementation. Use this guide to learn specific information that you, your presales engineers, or implementation engineers should know to integrate your printers.



## NOTE

Direct marking printers use special drivers and different terminology than other NiceLabel printing and printing components. The following NiceLabel terms correspond to direct marking equivalents:

NiceLabel	Direct marking
Label	Message
Label design software	Message design software
Picture	Logo

## 2. Recall only drivers specifics

Recall only drivers only perform recall operations. Store operations are not possible. You use third-party software (usually provided by your printer manufacturer) to design labels and download them to your printers. NiceLabel software sets label variable values and performs recall operations to print your labels. With the Recall option, your driver selects preloaded labels in your printer and updates your variable fields.

You can download [NiceLabel Desktop Designer](#) and Loftware drivers from [our website](#).

Requirements for Recall only drivers:

- Third-party label designer software for designing your label templates and downloading them to your printers.
- Labels created with NiceLabel Desktop Designer must contain only variable text objects. NiceLabel provides your third-party label templates with variable values during recall operations.

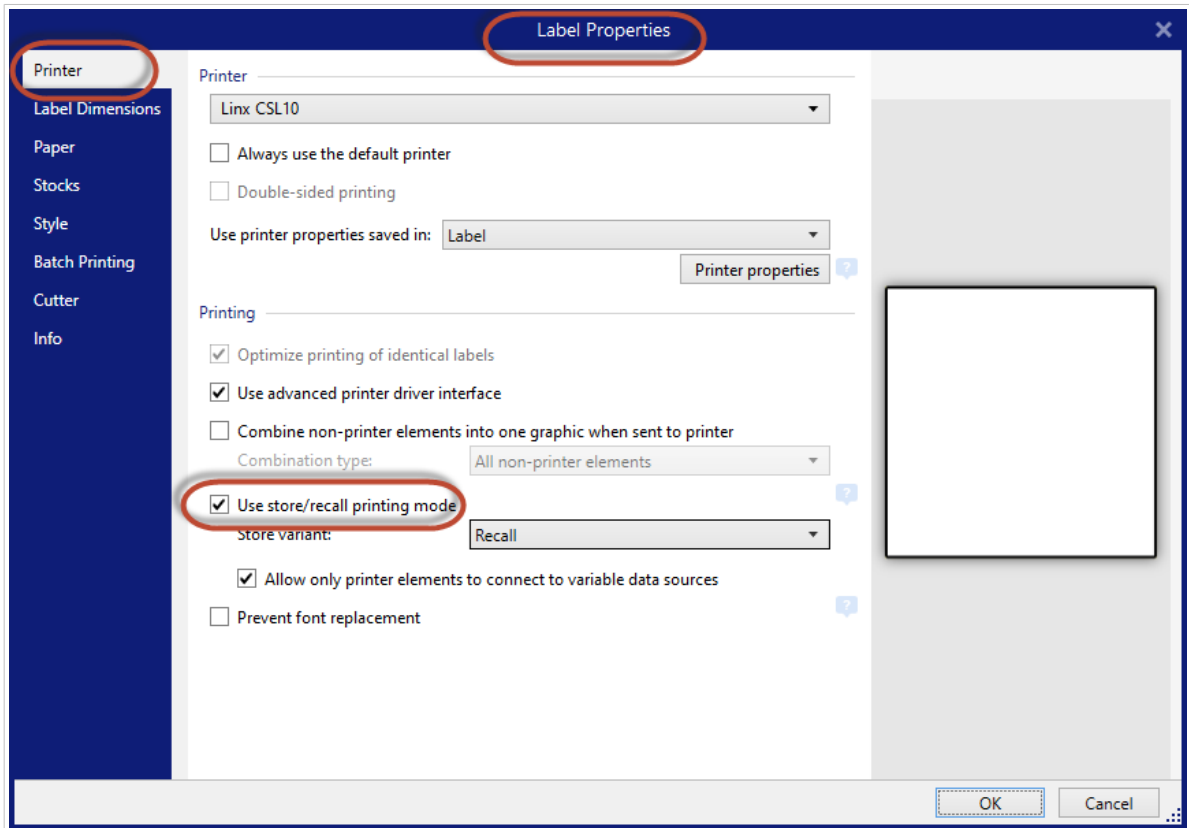
Verify requirements with your customer before you implement printing with Recall only printer drivers.

### 2.1. Implementation procedure

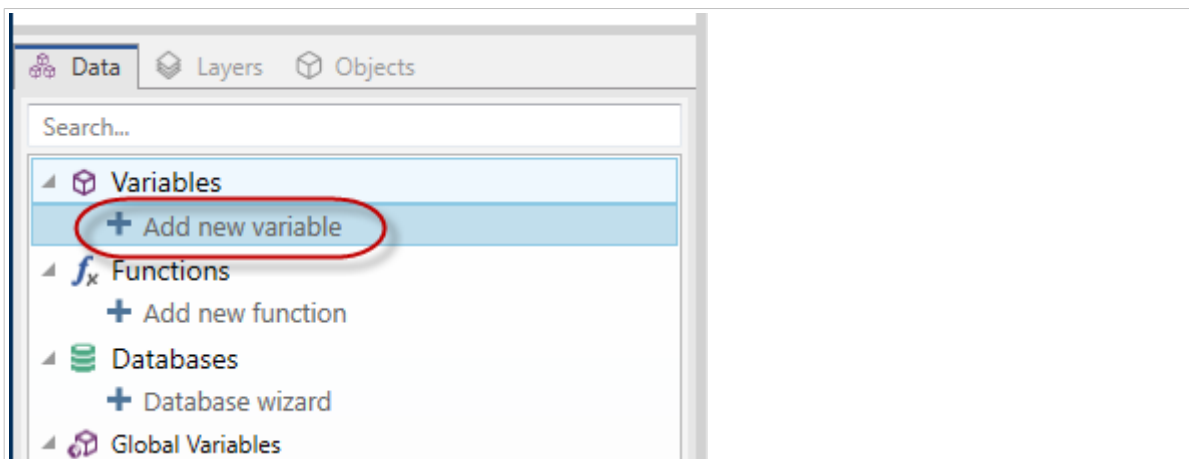
The following steps describe how to design your label templates, integrate NiceLabel Desktop Designer into your printing process, and print your labels.

1. Design your label templates with your third-party designer. Use variable objects (text and barcodes) for all your dynamic data (data that changes). Create unique variable names.
2. Download your label templates to your printers using your third-party application. Use unique file names for your downloaded label templates.
3. Design new label templates with NiceLabel Desktop Designer. Match your NiceLabel label template file names with their corresponding third-party label template names.

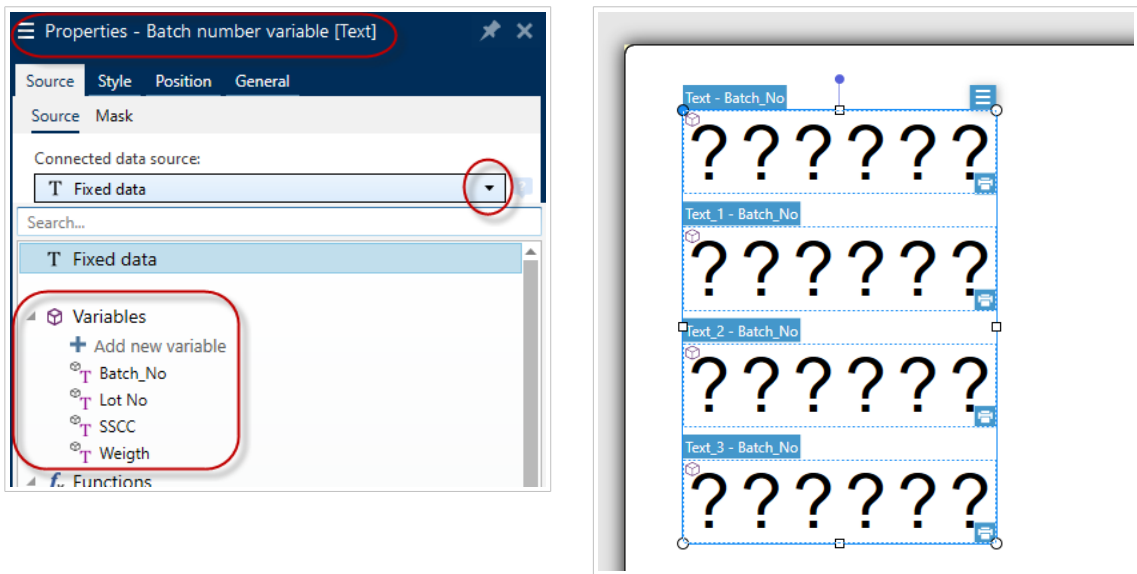
4. In NiceLabel Desktop Designer, open **Label Properties** for your templates and select **Use store/recall printing mode**.



5. Create variables. Use the same variable names corresponding with your third-party label template.

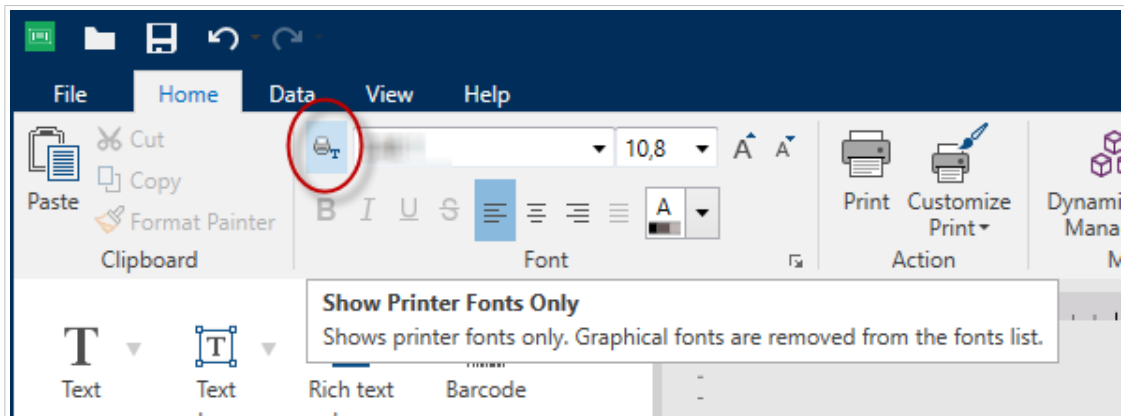


6. Add text objects to your label template and connect them to your variables.

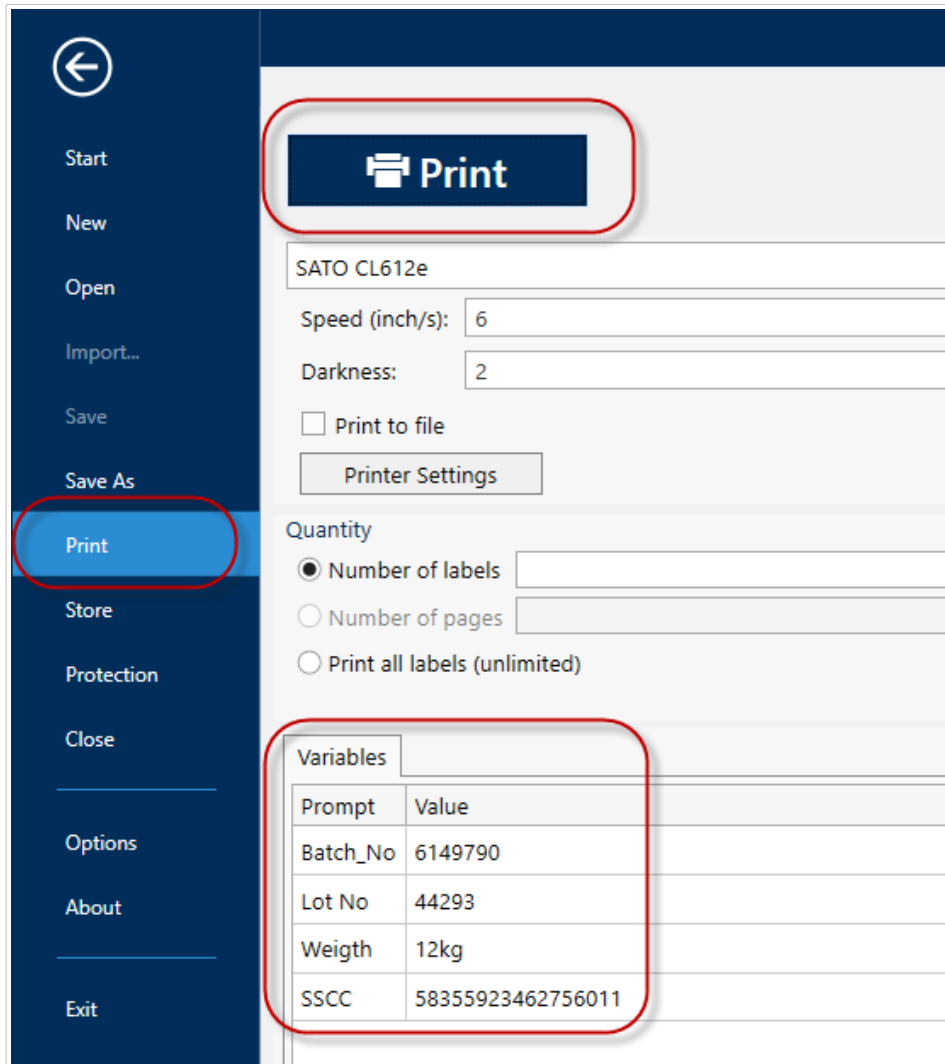


NiceLabel label size, text size, orientation, and object positions are not important here because the label template is already stored in your printer. NiceLabel sets only label variable values and performs recall operations to print your labels.

- Your label should contain only variable **Text** objects.
- You can only add 1 text object for each variable, even if your label template uses the same variable for multiple objects (text and barcode objects).
- Use printer fonts. The Recall only method doesn't support TrueType fonts.



7. Go to **File > Print** to select your label templates and update your variables. Click **Print** to recall (print) your labels.



NiceLabel Desktop Designer prints your third-party labels using your Recall only driver.

You can also use NiceLabel Designer PowerForms, Automation, or .NET API in Recall only printing processes.



#### NOTE

Each Software driver has specific settings you need to consider during installation and later when you design and print your labels. For more information, read the **Installation And Setup Guidelines** in your Software driver **Help**.